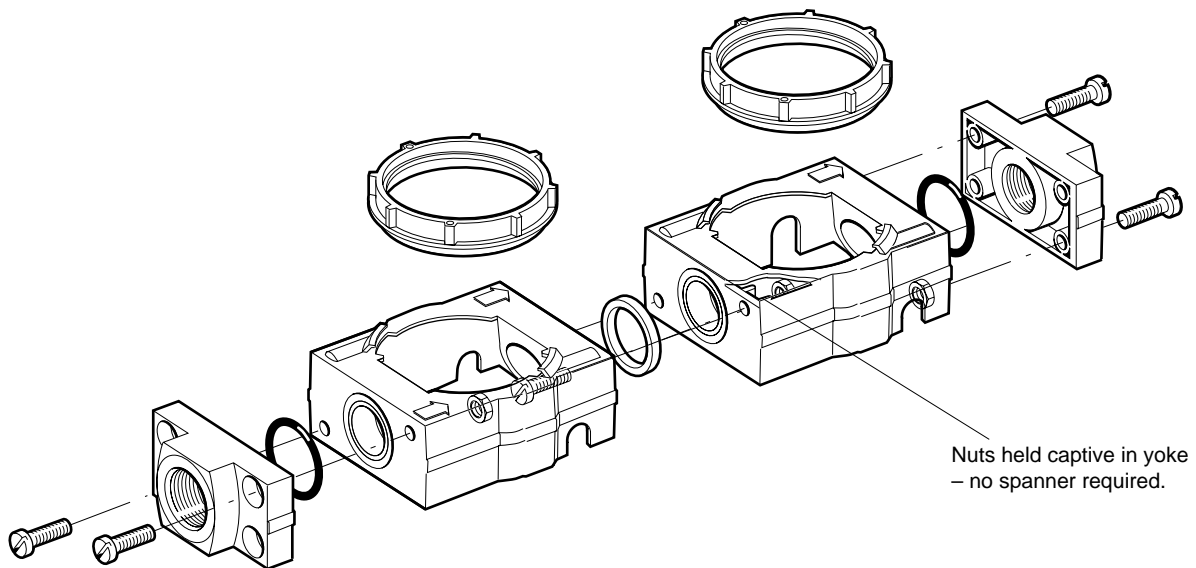


**Olympian Plus
Series 68 System Accessories**

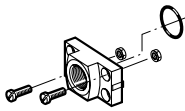
- **Olympian Series 68 System Components**
- **Bracket and Connector Kits**
- **Tamper Resistant Kits**
- **Lubricator Fill Devices**
- **Porting Block**
- **Silencers**





OLYMPIAN PLUS SERIES 68 ACCESSORIES

End Connector Kit



Note: Two kits are required per unidaptor. Each kit contains end connector, screws, nuts and o-ring.

Port Size

G1/2	5524-58
G3/4	5524-55
G1	5524-52
G1 1/4	5523-52
G1 1/2	5523-93

Rc1/2	5524-57
Rc3/4	5524-54
Rc1	5524-51
Rc1 1/4	5523-51
Rc1 1/2	5523-94

N.P.T. 1/2	5524-56
N.P.T. 3/4	5524-53
N.P.T. 1	5524-50
N.P.T. 1 1/4	5523-50
N.P.T. 1 1/2	5523-95

Yoke Connecting Kit

Comprising seal, screws and nuts.

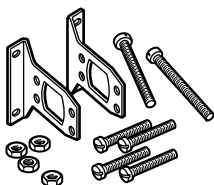


Part Number 18-026-987

Mounting Bracket

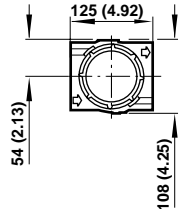
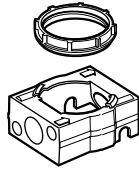
Brackets slip over end connectors and are bolted to Unidaptor with nuts and screws provided.

Note: Each kit contains 6 screws (2 x 80 mm and 4 x 35 mm) and 4 nuts.



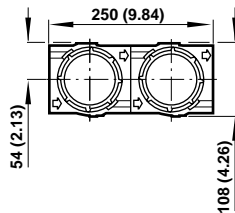
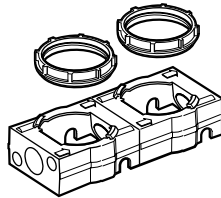
1/2" ported yoke	Part Number 18-001-979
3/4" ported yoke	18-001-979
1" ported yoke	18-001-979
1 1/4" ported yoke	18-001-978
1 1/2" ported yoke	N/A

Single Yoke



Part Number: 74785-98

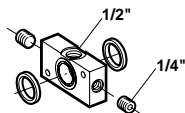
Double Yoke



Part Number: 74785-51

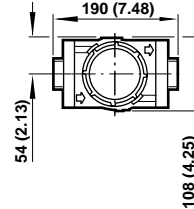
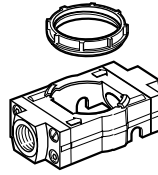
Porting Block

A top take-off porting block may be fitted to end connectors or shut-off valves. This can serve several purposes but is particularly convenient if instrument or other air is required to be piped away for auxiliary use prior to lubricator. A porting block adds 29 mm (1.14") to the overall length of a combination unit.



Thread Type	Part Number
ISO G	18-026-986
N.P.T.	18-026-983

Single Unidaptor



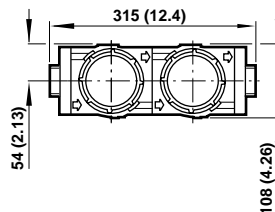
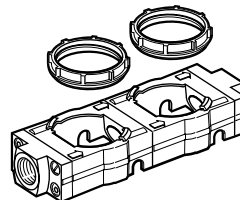
Port Size

G1/2	Y68A-4GN-N1N
G3/4	Y68A-6GN-N1N
G1	Y68A-8GN-N1N
G1 1/4	Y68A-AGN-N1N
G1 1/2	Y68A-BGN-N1N

Rc1/2	Y68A-4BN-N1N
Rc3/4	Y68A-6BN-N1N
Rc1	Y68A-8BN-N1N
Rc1 1/4	Y68A-ABN-N1N
Rc1 1/2	Y68A-BBN-N1N

N.P.T. 1/2	Y68A-4AN-N1N
N.P.T. 3/4	Y68A-6AN-N1N
N.P.T. 1	Y68A-8AN-N1N
N.P.T. 1 1/4	Y68A-AAN-N1N
N.P.T. 1 1/2	Y68A-BAN-N1N

Double Unidaptor



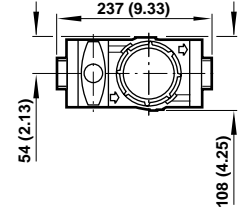
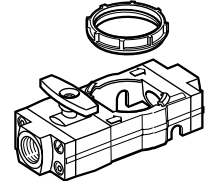
Port Size

G1/2	Y68A-4GN-N2N
G3/4	Y68A-6GN-N2N
G1	Y68A-8GN-N2N
G1 1/4	Y68A-AGN-N2N
G1 1/2	Y68A-BGN-N2N

Rc1/2	Y68A-4BN-N2N
Rc3/4	Y68A-6BN-N2N
Rc1	Y68A-8BN-N2N
Rc1 1/4	Y68A-ABN-N2N
Rc1 1/2	Y68A-BBN-N2N

N.P.T. 1/2	Y68A-4AN-N2N
N.P.T. 3/4	Y68A-6AN-N2N
N.P.T. 1	Y68A-8AN-N2N
N.P.T. 1 1/4	Y68A-AAN-N2N
N.P.T. 1 1/2	Y68A-BAN-N2N

Single Shut-off Unidaptor



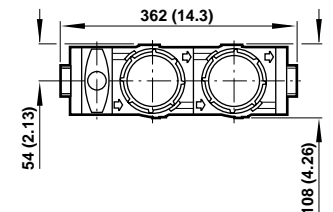
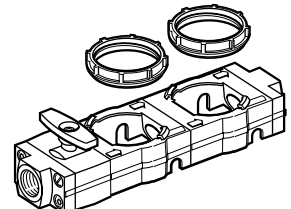
Port Size

G1/2	Y68B-4GN-C1N
G3/4	Y68B-6GN-C1N
G1	Y68B-8GN-C1N
G1 1/4	Y68B-AGN-C1N
G1 1/2	Y68B-BGN-C1N

Rc1/2	Y68B-4BN-C1N
Rc3/4	Y68B-6BN-C1N
Rc1	Y68B-8BN-C1N
Rc1 1/4	Y68B-ABN-C1N
Rc1 1/2	Y68B-BBN-C1N

N.P.T. 1/2	Y68B-4AN-C1N
N.P.T. 3/4	Y68B-6AN-C1N
N.P.T. 1	Y68B-8AN-C1N
N.P.T. 1 1/4	Y68B-AAN-C1N
N.P.T. 1 1/2	Y68B-BAN-C1N

Double Shut-off Unidaptor



Port Size

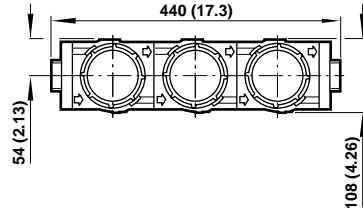
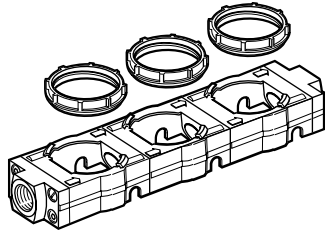
G1/2	Y68B-4GN-C2N
G3/4	Y68B-6GN-C2N
G1	Y68B-8GN-C2N
G1 1/4	Y68B-AGN-C2N
G1 1/2	Y68B-BGN-C2N

Rc1/2	Y68B-4BN-C2N
Rc3/4	Y68B-6BN-C2N
Rc1	Y68B-8BN-C2N
Rc1 1/4	Y68B-ABN-C2N
Rc1 1/2	Y68B-BBN-C2N

N.P.T. 1/2	Y68B-4AN-C2N
N.P.T. 3/4	Y68B-6AN-C2N
N.P.T. 1	Y68B-8AN-C2N
N.P.T. 1 1/4	Y68B-AAN-C2N
N.P.T. 1 1/2	Y68B-BAN-C2N



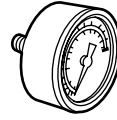
Treble Unidaptor



Port Size

G1/2	Y68A-4GN-N3N
G3/4	Y68A-6GN-N3N
G1	Y68A-8GN-N3N
G1 1/4	Y68A-AGN-N3N
G1 1/2	Y68A-BGN-N3N
Rc1/2	Y68A-4BN-N3N
Rc3/4	Y68A-6BN-N3N
Rc1	Y68A-8BN-N3N
Rc1 1/4	Y68A-ABN-N3N
Rc1 1/2	Y68A-BBN-N3N
N.P.T. 1/2	Y68A-4AN-N3N
N.P.T. 3/4	Y68A-6AN-N3N
N.P.T. 1	Y68A-8AN-N3N
N.P.T. 1 1/4	Y68A-AAN-N3N
N.P.T. 1 1/2	Y68A-BAN-N3N

Pressure Gauges



Ø 50 mm Pressure Gauge

R 1/8 Connection

4 bar (60 psig)	18-013-011
10 bar (150 psig)	18-013-013
25 bar (360 psig)	18-013-014

1/8 PTF Connection

4 bar (60 psig)	18-013-202
10 bar (150 psig)	18-013-204
25 bar (360 psig)	18-013-206

Quick Fill Nipple



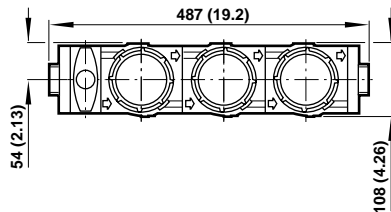
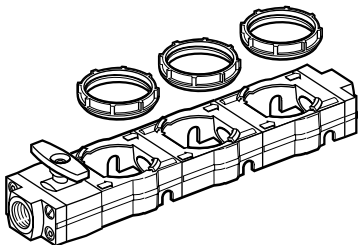
Part Number 18-011-021

Liquid Level Switch



Part Number
8 litre: 18-007-975
20 litre: 18-007-974

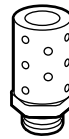
Treble Shut-off Unidaptor



Port Size

G1/2	Y68B-4GN-C3N
G3/4	Y68B-6GN-C3N
G1	Y68B-8GN-C3N
G1 1/4	Y68B-AGN-C3N
G1 1/2	Y68B-BGN-C3N
Rc1/2	Y68B-4BN-C3N
Rc3/4	Y68B-6BN-C3N
Rc1	Y68B-8BN-C3N
Rc1 1/4	Y68B-ABN-C3N
Rc1 1/2	Y68B-BBN-C3N
N.P.T. 1/2	Y68B-4AN-C3N
N.P.T. 3/4	Y68B-6AN-C3N
N.P.T. 1	Y68B-8AN-C3N
N.P.T. 1 1/4	Y68B-AAN-C3N
N.P.T. 1 1/2	Y68B-BAN-C3N

Silencer



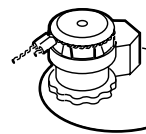
Thread Type	Part Number
R 1	MB008B
N.P.T. 1	MB008A

Remote Fill Kit



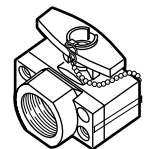
Part Number 18-027-980

Tamper Resistant Wire



Part Number 2117-01
(pack of 10)

Shut-off Valve



See N/AL.8.260.600



Warning

These products are intended for use in industrial compressed air systems only. Do not use these products where pressures and temperatures can exceed those listed under **'Technical Data'**.

Before using these products with fluids other than those specified, for non-industrial applications, life-support systems, or other applications not within published specifications, consult NORGREN.

Through misuse, age, or malfunction, components used in fluid power systems can fail in various modes. The system designer is warned to consider the failure modes of all component parts used in fluid power systems and to provide adequate safeguards to prevent personal injury or damage to equipment in the event of such failure.

System designers must provide a warning to end users in the system instructional manual if protection against a failure mode cannot be adequately provided.

System designers and end users are cautioned to review specific warnings found in instruction sheets packed and shipped with these products.