

- **Olympian Plus plug in system**
- **Lubricator flow sensor provides a nearly constant oil/air ratio over a wide range of air flows**
- **All around (360°) visibility of the lubricator sight-feed dome simplifies installation and adjustment**
- **Regulator balanced valve minimizes effect of variation in the inlet pressure on the outlet pressure**

Use Micro-Fog models in applications containing one or more points of lubrication.

Use Oil-Fog models to lubricate a single tool, cylinder, or other air driven device.



Technical Data

Fluid: Compressed air

Maximum pressure: 17 bar

Operating temperature*: -20° to +80°C

* Air supply must be dry enough to avoid ice formation at temperatures below +2°C

Partical removal: 5, 25 or 40 µm

Automatic drain connection: Rc1/8

Automatic drain operating conditions (float operated):

Bowl pressure required to close drain: Greater than 0,3 bar

Bowl pressure required to open drain: Less than 0,2 bar

Minimum air flow required to close drain: 1 dm³/s

Manual operation: Depress pin inside drain outlet to drain bowl

Nominal bowl size:

0,5 litre

1 litre

Gauge ports: Rc1/8

Recommended lubricants: See page N/AL.8.900.935

Materials:

Yoke: Aluminium

Regulator bonnet: Aluminium

Regulator valve: Aluminium

Filter, regulator, lubricator bodies: Aluminium

Filter and lubricator bowls: Aluminium

Filter and lubricator liquid level indicator: Pyrex

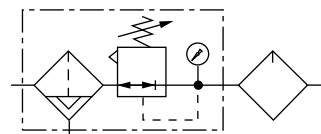
Filter element: Sintered bronze

Elastomers: Synthetic rubber

Ordering Information

See *Ordering Information* on the following pages.

ISO Symbols

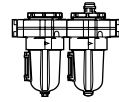
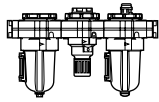


Filter with automatic drain,
Relieving regulator,
Lubricator with closed bottom bowl



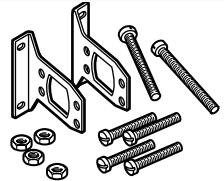
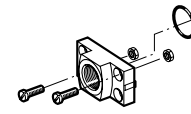
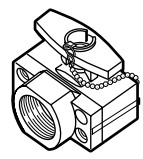
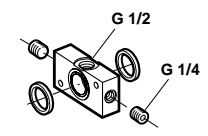
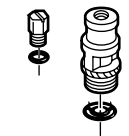
68 Series Combination Units

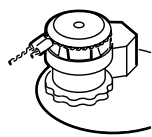

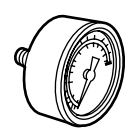
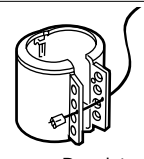
Ordering Information. Models listed include a yoke with ISO G threads. Regulator is equipped with knob adjustment, relieving diaphragm, and a 0,4 to 8 bar outlet pressure adjustment range*. A gauge is not included. Filter and lubricator bowls are 0,5 litre with liquid level indicator. Lubricator bowl has closed bottom. Filter is equipped with a 40 µm element.

Type	Port Size	Micro-Fog		Oil-Fog	
		Manual Drain	Automatic Drain	Manual Drain	Automatic Drain
Filter/Regulator Lubricator 	G3/4	BL68-628	BL68-608	BL68-638	BL68-618
	G1	BL68-828	BL68-808	BL68-838	BL68-818
	G1 1/4	BL68-A28	BL68-A08	BL68-A38	BL68-A18
	G1 1/2	BL68-B28	BL68-B08	BL68-B38	BL68-B18
Filter Lubricator 	G3/4	FL68-628	FL68-608	FL68-638	FL68-618
	G1	FL68-828	FL68-808	FL68-838	FL68-818
	G1 1/4	FL68-A28	FL68-A08	FL68-A38	FL68-A18
	G1 1/2	FL68-B28	FL68-B08	FL68-B38	FL68-B18
Filter Regulator Lubricator 	G3/4	FRL68-628	FRL68-608	FRL68-638	FRL68-618
	G1	FRL68-828	FRL68-808	FRL68-838	FRL68-818
	G1 1/4	FRL68-A28	FRL68-A08	FRL68-A38	FRL68-A18
	G1 1/2	FRL68-B28	FRL68-B08	FRL68-B38	FRL68-B18

* Outlet pressure can be adjusted to pressures in excess of, and less than, those specified. Do not use these units to control pressures outside of the specified ranges.

Accessories

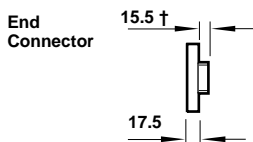
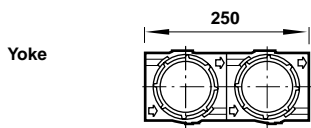
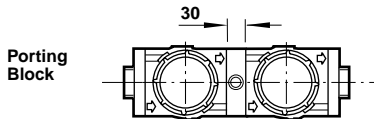
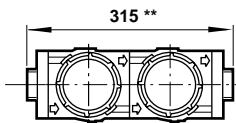
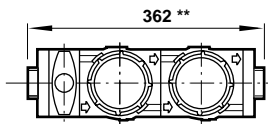
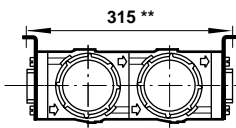
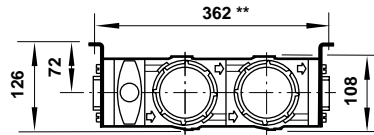
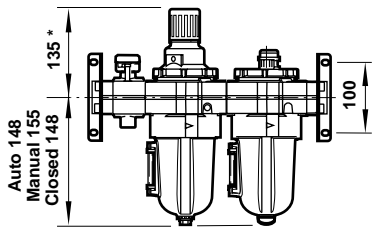
 <p>Wall Mounting Bracket</p>	 <p>End Connector</p>	 <p>Shut-Off Valve</p>	 <p>Porting Block - Provides 3 outlets for auxiliary air.</p>	 <p>Lubricator Pyrex Dome and Metal Fill Plug</p>
G 3/4 yoke: 18-001-979	G 3/4: 5524-55	G 3/4: T68C-6GB-B2N	18-026-986	5605-60
G 1 yoke: 18-001-979	G 1: 5524-52	G1: T68C-8GB-B2N		
G 1 1/4 yoke: 18-001-978	G 1 1/4: 5523-52	G 1 1/4: T68C-AGB-B2N		
G 1 1/2 yoke: NA	G 1 1/2: 5523-93	G 1 1/2: T68C-BGB-B2N		

 <p>Lubricator Tamper Resistant Wire</p>	 <p>Lubricator Quick Fill Nipple</p>	 <p>Regulator Ø 50 mm Pressure Gauge R1/8 Connection</p>	 <p>Regulator Tamper Resistant Cover and Seal Wire</p>
2117-01 (pack of 10)	18-011-021	4 bar: 18-013-011	Cover and wire: 4355-51
		10 bar: 18-013-013	Pack of 10 wires: 2117-01
		25 bar: 18-013-014	

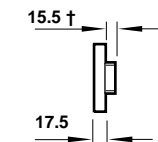
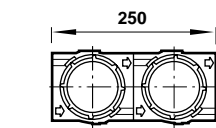
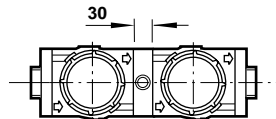
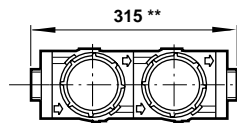
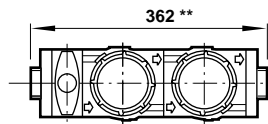
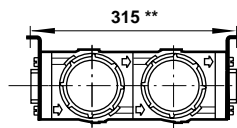
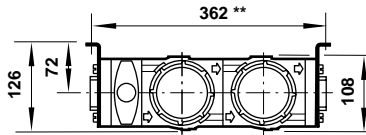
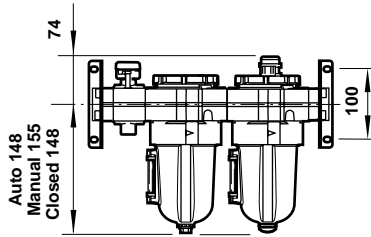


Dimensions mm

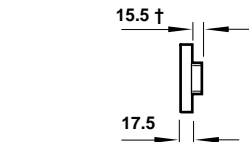
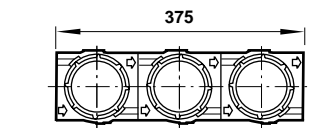
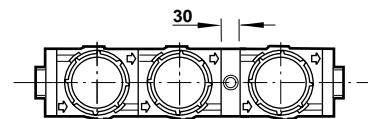
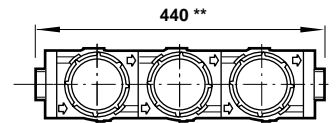
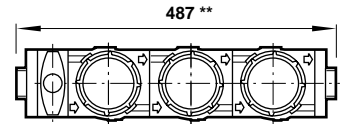
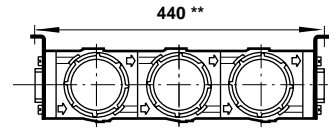
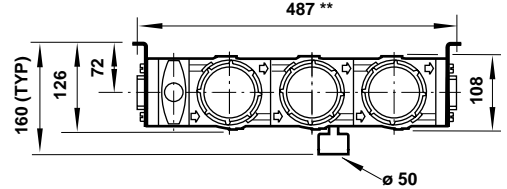
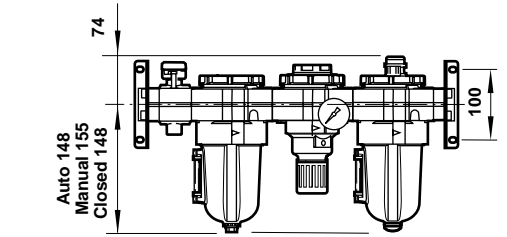
Filter/Regulator-Lubricator



Filter-Lubricator



Filter-Regulator-Lubricator



* Add 37 mm for unit with T-bar adjustment.
 ** Add 10 mm for yokes with G1 1/4 and G1 1/2 end connectors.
 † Add 5 mm for G1 1/4 and G1 1/2 end connector.



Warning

These products are intended for use in industrial compressed air systems only. Do not use these products where pressures and temperatures can exceed those listed under 'Technical Data'.

Before using these products with fluids other than those specified, for non-industrial applications, life-support systems, or other applications not within published specifications, consult NORGREN.

Through misuse, age, or malfunction, components used in fluid power systems can fail in various modes. The system designer is warned to consider the failure modes of all component parts used in fluid power systems and to provide adequate safeguards to prevent personal injury or damage to equipment in the event of such failure.

System designers must provide a warning to end users in the system instructional manual if protection against a failure mode cannot be adequately provided.

System designers and end users are cautioned to review specific warnings found in instruction sheets packed and shipped with these products.