

- Metallic parts meet NACE[†] recommendations
- Lloyd's Register Type Approved
- Robust high corrosion resistant design
- Balanced valve for accurate and rapid response to flow demand and line pressure changes
- Panel Mounting facility

[†]National Association of Corrosion Engineers - recognised oil-field recommendation for resistance to sulphide stress cracking common in well-head and other corrosive environments.

Technical Data

Medium:

Compressed air only

Maximum Inlet Pressure:

20 bar

Operating Temperature:

-20°C* to +80°C

*Consult our Technical Service for use below +2°C

Recommended Regulated Pressures^{††}:

0,4 - 10 bar standard

0 - 4 bar optional

2 - 16 bar optional

^{††}Can be adjusted to zero bar outlet pressure and, generally, to pressures in excess of those specified.

Gauge Ports:

1/4 N.P.T.

Maximum Flow with 10 bar inlet pressure, 6,3 bar outlet pressure and pressure drop of 1 bar:

50 dm³/s

Materials

Stainless steel body, bonnet and adjusting screw. Synthetic rubber elastomeric materials.

Ordering Information

To order a standard Regulator, quote model number from table overleaf.

For non-standard models substitute appropriate digits as instructed.

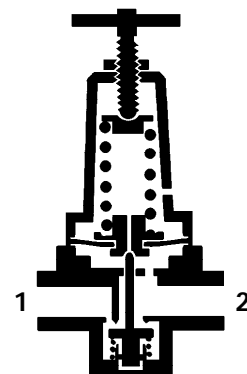
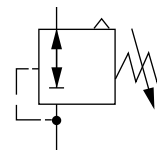


Port Size

1/2 N.P.T.

Alternative Models

Other port thread forms



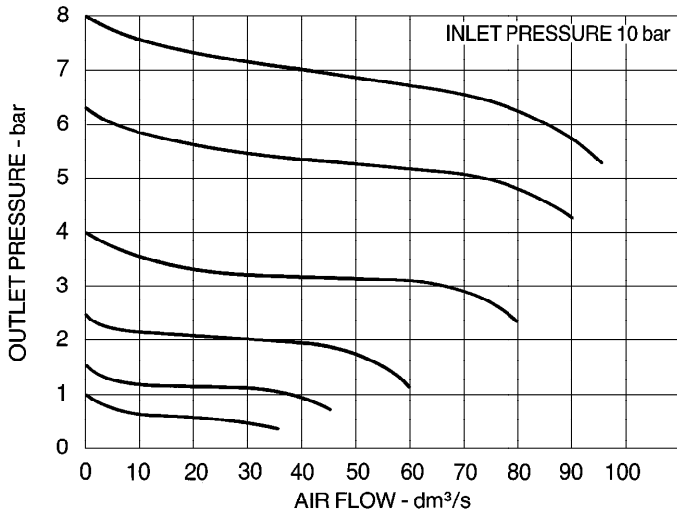


R22

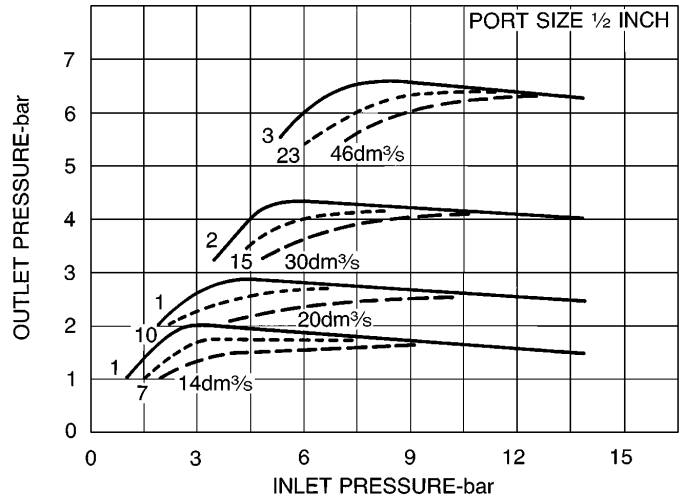


Typical Performance Characteristics

FLOW CHARACTERISTICS



REGULATION CHARACTERISTICS



Standard Regulators

10 bar spring

Port Size	Relieving	Weight kg	Non-relieving	Weight kg
1/2 N.P.T.	R22-401-RNMA	1,52	R22-401-NNMA	1,54

Non-standard Models

For optional 4 or 16 bar springs, substitute 'F' or 'S' respectively for 'M' at the 9th digit, e.g. R22-401-RNFA.

For other options, please consult our Technical Service.

Accessories

Wall Mounting Bracket Kit, see page 8.6.091.03.

Panel Mounting Kit, see page 8.6.091.04.

Connectors, 1/2 N.P.T. x 1/2 N.P.T. reference 6348-06.

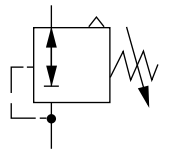
Reducing Connectors, 1/2 N.P.T. x 1/4 N.P.T. reference 6348-04, 1/2 N.P.T. x 3/8 N.P.T. reference 6348-05.

Shut-Off Ball Valve, 1/2 N.P.T. female x 1/2 N.P.T. female reference VC8TC2B.

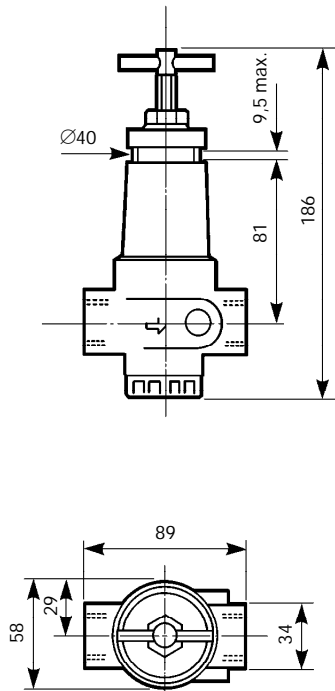
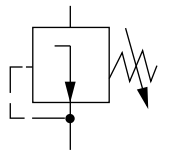


Regulator

Relieving
R22-401-RNMA 1/2 N.P.T.

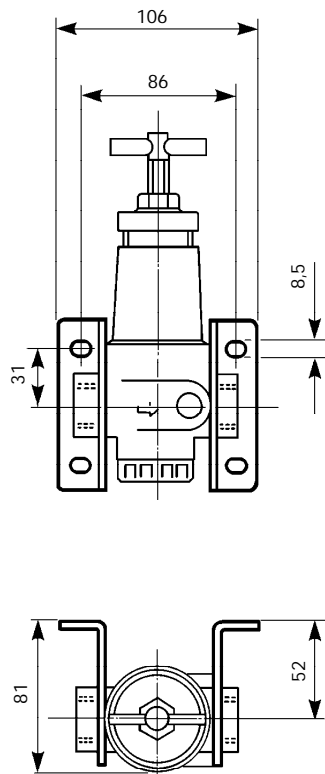


Non-relieving
R22-401-NNMA 1/2 N.P.T.



Bracket Mounting

Bracket Kit reference:
18-001-962





R22

Lloyd's Register

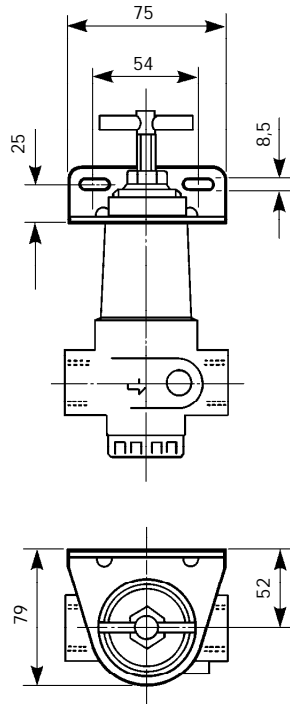


Panel Mounting

Panel Mounting Kit reference:

18-001-959

Includes Panel Mounting Nut and single bracket.



Spares Kits

Type	Repair Kit
Relieving	R22-100R
Non-relieving	R22-100NR

Warning

These products are intended for use in industrial compressed air systems only. Do not use these products where pressures and temperatures can exceed those listed under 'Technical Data'.

Before using these products with fluids other than those specified, for non-industrial applications, life-support systems, or other applications not within published specifications, consult NORGREN MARTONAIR.

Through misuse, age, or malfunction, components used in fluid power systems can fail in various modes. The system designer is warned to consider the failure modes of all component parts used in fluid power systems and to provide adequate safeguards to prevent personal injury or damage to equipment in the event of such failure.

System designers must provide a warning to end users in the system instructional manual if protection against a failure mode cannot be adequately provided.

System designers and end users are cautioned to review specific warnings found in instruction sheets packed and shipped with these products.