

**17 Series
Micro-Fog and Oil-Fog Lubricators
3/4", 1", 1 1/4" and 1 1/2" Port Sizes**

- **All around (360°) visibility of the sight-feed dome simplifies installation and adjustment**
- **Screw-on bowl reduces maintenance time**
- **Can be serviced without the use of tools or removal from the air line**
- **Flow sensor design provides a nearly constant oil/air ratio over a wide range of air flows**

Use Micro-Fog models in applications containing one or more points of lubrication

Use Oil-Fog models to lubricate a single tool, cylinder, or other air driven device

Technical Data

Fluid: Compressed air

Maximum pressure: 17 bar (250 psig)

Operating temperature*: -20° to +80°C (0° to +175°F)

* Air supply must be dry enough to avoid ice formation at temperatures below +2°C (+35°F).

Start point (minimum flow required for lubricator operation):

3,8 dm³/s (8 scfm) at 6,3 bar (90 psig) inlet pressure

Typical flow with 6,3 bar (90 psig) inlet pressure and 0,5 bar (7 psig) pressure drop:

1" ports: 130 dm³/s (275 scfm)

Nominal reservoir size:

Standard: 1 litre (1 quart US)

Optional: 0,5 litre (1 pint US)

2 litre (2 quart US)

8 litre (2 gallon US)

20 litre (5 gallon US)

Recommended lubricants: See page N/AL.8.900.935

Materials:

Body: Aluminum

Reservoir:

0,5 litre (1 pint US), 1 litre (1 quart US):

Aluminum

2 litre (2 quart US) and larger: Steel*

Reservoir sight glass: Pyrex

Sight-feed dome:

Standard: Transparent nylon

Optional: Pyrex and aluminum

Elastomers: Neoprene and nitrile

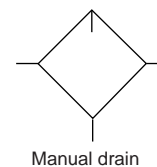
* The 8 and 20 litre (2 and 5 gallon) steel reservoirs are ASME rated according to the ASME Pressure Vessel Code, Section VIII



Ordering Information

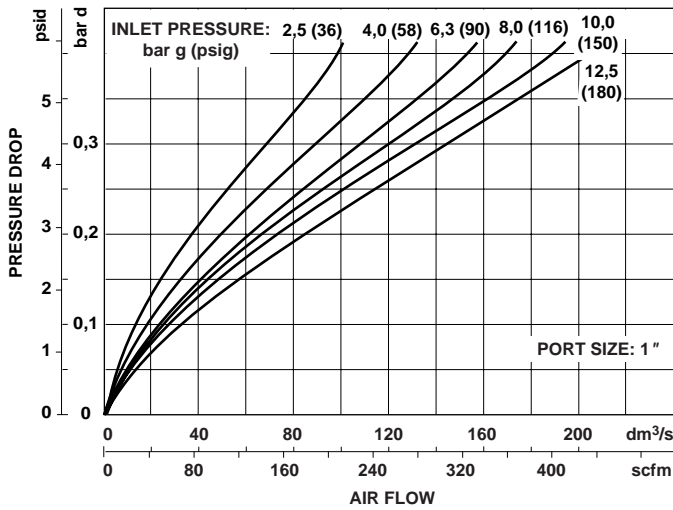
See *Ordering Information* on the following pages.

ISO Symbol





Typical Performance Characteristics (Littleton)



Ordering Information. Models listed are uni-directional and include a 1 litre (1 quart US) metal bowl with drain, sight glass, and ISO G threads (BSPP threads on 1 1/2" ported units).

Port Size	Micro-Fog Models *	Oil-Fog Models *	Flow† dm ³ /s (scfm)	Weight kg (lbs)
G3/4	L17-600-MPDG	L17-600-OPDG	76 (160)	1.69 (3.73)
G1	L17-800-MPDG	L17-800-OPDG	130 (275)	1.62 (3.56)
G1 1/4	L17-A00-MPDG	L17-A00-OPDG	130 (275)	2.11 (4.65)
G1 1/2	L17-B00-MPDC	L17-B00-OPDC	130 (275)	1.67 (3.67)

* Models listed in the order table must not be located downstream of frequently cycling directional control valves. Order the optional bi-directional Oil-Fog Lubricator for use under such conditions.

† Typical flow with 6,3 bar (90 psig) inlet pressure and a pressure drop of 0,5 bar (7 psig).

Alternative Models

L 1 7 - ★ ★ ★ - ★ ★ ★ ★

Port Size	Substitute
3/4"	6
1"	8
1 1/4"	A
1 1/2"	B

Option	Substitute
Not applicable	00

Lubricator Type	Substitute
Micro-Fog	M
Oil-Fog	O

Flow	Substitute
Bi-directional (Oil-Fog only)	E
Uni-directional	P

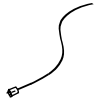
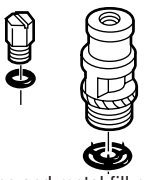


Threads	Substitute
PTF	A
ISO Rc taper	B
BSPP (1 1/2" ported units)	C
ISO G parallel (not available with 1 1/2" ported units)	G

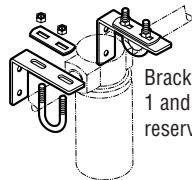
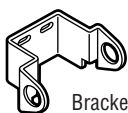
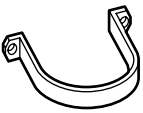

Reservoir	Substitute
0,5 litre (1 pint US) metal, sight glass (Shipston only)*	9
0,5 litre (1 pint US) metal, drain, sight glass (Shipston only)*	7
1 litre (1 quart US) metal, drain, sight glass	D
1 litre (1 quart US) metal, remote fill, sight glass	4
2 litre (2 quart US) metal, drain, sight glass	H
8 litre (2 gallon US) metal, drain, sight glass	J
20 litre (5 gallon US) metal, drain, sight glass	K

* Only available with 3/4" and 1" port sizes.

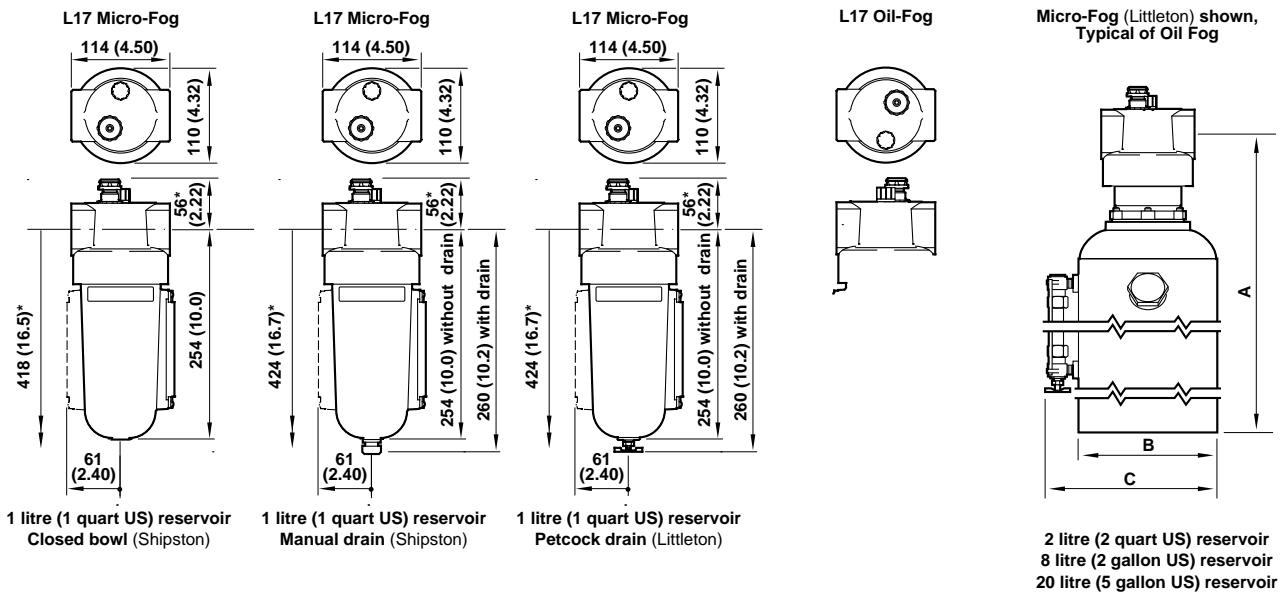


Accessories

			
Lubricator adjustment tamper resistant wire	Pyrex dome and metal fill plug	Optional fill plugs	Remote fill kit
2117-01	5605-60	Quick fill nipple: 18-011-021	18-027-980
		Fill plug with 1/8" PTF tapped hole: 5301-52	(0,5 litre reservoir only)

			
Brackets for 1 and 2 litre reservoirs	Brackets for 0,5 litre reservoirs	Strap for 8 and 20 litre reservoirs	Liquid level switch
Reservoir Size	Port Size	Part Number	Switch Type Reservoir Size Part Number
0,5 litre (1 pint US)	3/4	18-001-980	Low level 2 litre (2 quart US) (Littleton) 18-023-612
0,5 litre (1 pint US)	1	18-001-981	Low level 8 litre (2 gallon US) (Littleton) 18-023-614
1 & 2 litre (1 & 2 quart US)	3/4 & 1	6212-50	Low level 8 litre (2 gallon US) (Shipston) 18-007-975
1 & 2 litre (1 & 2 quart US)	1 1/4 & 1 1/2	6212-51	Low level 20 litre (5 gallon US) (Littleton) 18-023-616
8 litre (2 gallon US)	All	18-001-056	Low level 20 litre (5 gallon US) (Shipston) 18-007-974
20 litre (5 gallon US)	All	18-001-039	High/Low level 8 litre (2 gallon US) (Littleton) 18-023-656
			High/Low level 20 litre (5 gallon US) (Littleton) 18-023-658

Dimensions – mm (Inches)



Reservoir	A	B Ø	C
2 litre (2 quart US) (Littleton)	333 (13.1)	118 (4.63)	137 (5.38)
8 litre (2 gallon US) (Littleton)	538 (21.2)	159 (6.25)	189 (7.44)
8 litre (2 gallon US) (Shipston)*	397 (15.6)	252 (9.92)	290 (11.4)
20 litre (5 gallon US) (Littleton)	614 (24.2)	260 (10.3)	291 (11.4)
20 litre (5 gallon US) (Shipston)*	509 (20.0)	306 (12.1)	344 (13.5)

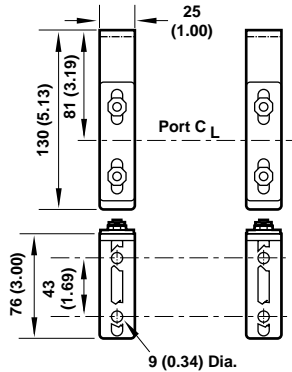
* Standard dome: 56 mm (2.22")
Pyrex dome: 69 mm (2.72")



Wall Brackets

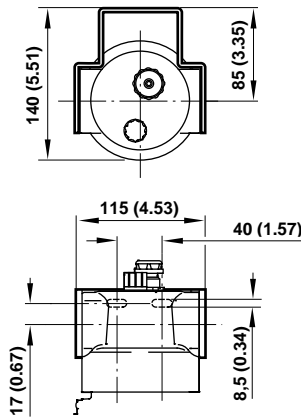
6212-50, 6212-51 bracket.

Use 8 mm (5/16") screws to mount bracket to wall.



18-001-980, 18-001-981 brackets.

Use 8 mm (5/16") screws to mount bracket to wall.

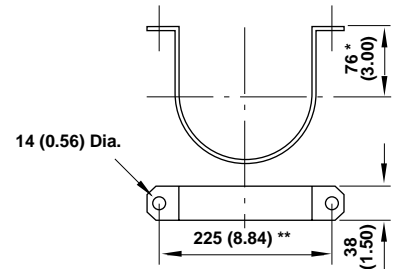


Wall Bracket Reference

Model	Part number
0,5 litre (1 pint US) reservoir with 3/4" ports (Shipston only)	18-001-980
0,5 litre (1 pint US) reservoir with 1" ports (Shipston only)	18-001-981
1 and 2 litre (1 and 2 quart US) reservoirs with 3/4", 1" ports	6212-50
1 and 2 litre (1 and 2 quart US) reservoirs with 1 1/4", 1 1/2" ports	6212-51
8 litre (2 gallons US) reservoir	18-001-056
20 litre (5 gallons US) reservoir	18-001-039

18-001-056, 18-001-039 strap.

Use 12 mm (1/2") screws to mount bracket to wall.



- * 76 mm (3.00") for 18-001-056
127 mm (5.00") for 18-001-039
- ** 225 mm (8.84") for 18-001-056
330 mm (13.00") for 18-001-039

Service Kits

Item	Type	Part Number
Service kit	Oil-Fog and Micro-Fog (Littleton)	5771-02
	Micro-Fog (Shipston)	L17-100M
	Oil-Fog (Shipston)	L17-100
Gasket kit	Micro-Fog and Oil-Fog (Shipston)	L17-GK
Reservoir sight glass kit	0,5 litre (1 pint US) (Shipston only)	5872-99
	1 litre (1 quart US)	2273-22
	2 litre (2 quart US)	2273-04
	8 and 20 litre (2 and 5 gallon US)	2274-01
Replacement drain	Manual (Shipston)	684-84
Replacement drain	Petcock	684-01

Service kit 5771-02 (Littleton), includes o-rings, seals and gaskets.

Service kits L17-100M, L17-100 (Shipston), include threaded cap, ball, o-rings, gaskets, screen, Micro-Fog or Oil-Fog sight dome assembly, filler plug and spring.

Gasket kit (Shipston), includes o-rings, seals, gaskets and screen.

Reservoir sight glass kits, include all o-rings, seals, glass, guard, and sight glass hardware.

Warning

These products are intended for use in industrial compressed air systems only. Do not use these products where pressures and temperatures can exceed those listed under 'Technical Data'.

Before using these products with fluids other than those specified, for non-industrial applications, life-support systems, or other applications not within published specifications, consult Norgren.

Through misuse, age, or malfunction, components used in fluid power systems can fail in various modes. The system designer is warned to consider the failure modes of all component parts used in fluid power systems and to provide adequate safeguards to prevent personal injury or damage to equipment in the event of such failure.

System designers must provide a warning to end users in the system instructional manual if protection against a failure mode cannot be adequately provided.

System designers and end users are cautioned to review specific warnings found in instruction sheets packed and shipped with these products.