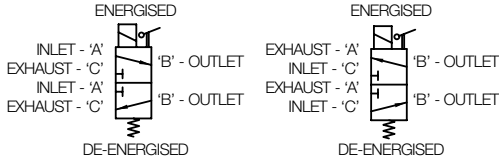


ICO4S 1/4" 3/2 20 BAR (290 PSI) A-L-L



Temperature ratings:

Media (min/max -20°C/90°C
 (-4°F/194°F) Ambient (min/
 max 0°C/60°C (32°F/140°F))

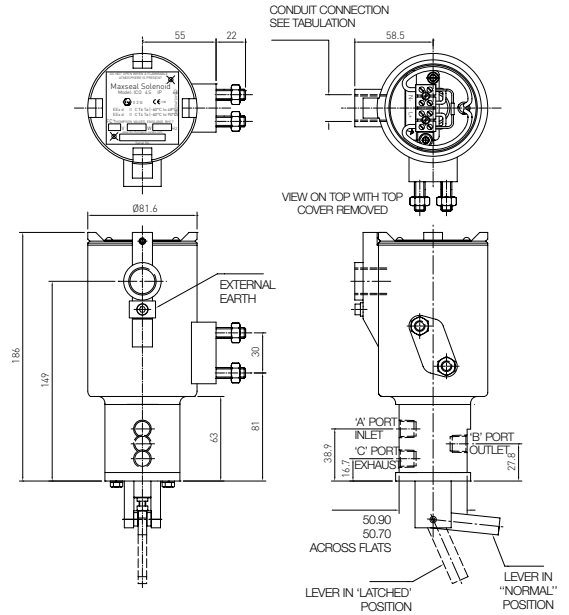
Valve size:

1/4" balanced poppet valve

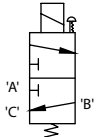
Weight: 5.5 kg

Materials:

Solenoid pot - stainless steel - BFC 316
 Top cover - stainless steel - BFC 316
 Valve body & trim materials - 316 stainless steel - 316L stainless steel to the valve body and trim materials
 O-rings seats & seals -high nitrile (NBR)
 Seats - nylon 66
 Coil insulation - class H



ICO4S 1/4" 3/2 20 BAR (290 PSI) JSMO



Temperature ratings:

Media (min/max -20°C/90°C
 (-4°F/194°F) Ambient (min/
 max 0°C/60°C (32°F/140°F))

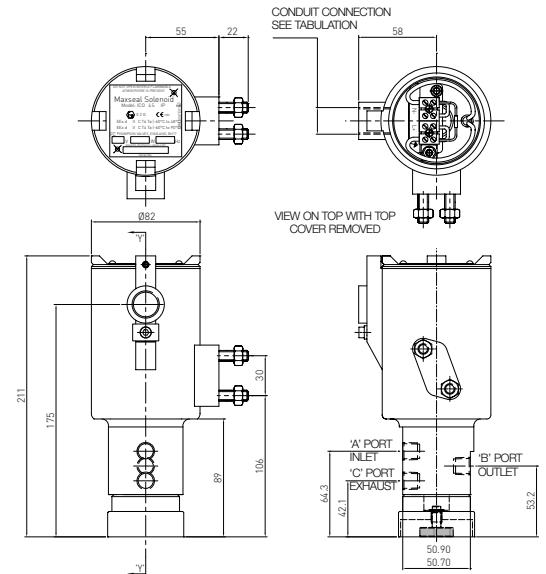
Valve size:

1/4" balanced poppet valve

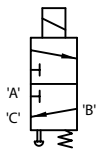
Weight: 6 kg

Materials:

Solenoid pot - stainless steel - BFC 316
 Top cover - stainless steel - BFC 316
 Valve body & trim materials - 316 stainless steel - 316L stainless steel to the valve body and trim materials
 O-rings seats & seals -high nitrile (NBR)
 Coil insulation - class H



ICO4S 1/4" 3/2 20 BAR (290 PSI) PBMR



Temperature ratings:

Media (min/max -20°C/90°C
 (-4°F/194°F) Ambient (min/
 max 0°C/60°C (32°F/140°F))

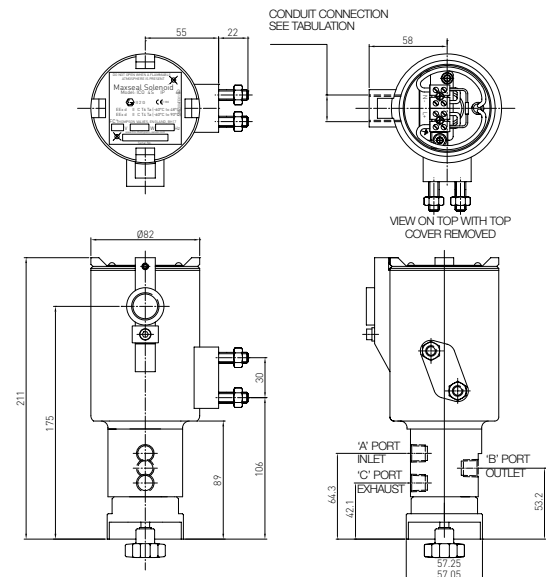
Valve size:

1/4" balanced poppet valve

Weight: 5.5 kg

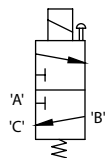
Materials:

Solenoid pot - stainless steel - BFC 316
 Top cover - stainless steel - BFC 316
 Valve body & trim materials - 316 stainless steel - 316L stainless steel to the valve body and trim materials
 O-rings seats & seals -high nitrile (NBR)
 Coil insulation - class H



Profile and dimensions mm

ICO4S 1/4" 3/2 20 BAR (290 PSI) PBMO

**Temperature ratings:**Media (min/max):
-20°C/90°C (-4°F/194°F)Ambient: must be used
within 'T' class temperature
ranges shown**Weight:** 5 kg**Materials:**

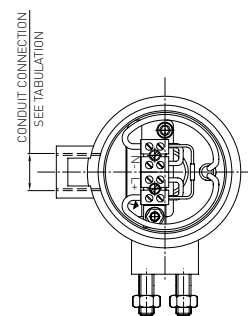
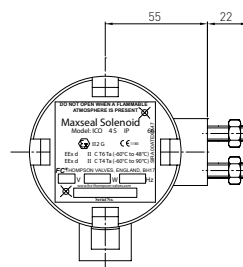
Valve body & trim - 316L

stainless steel

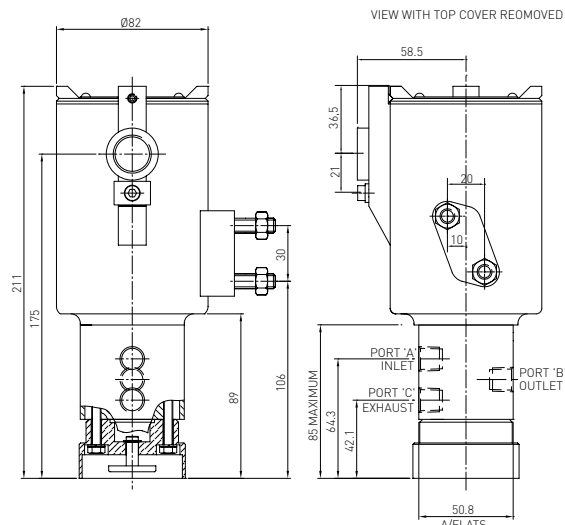
O-Rings seats & seals - high
nitrile

Paint finish - stainless steel

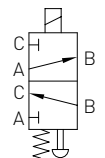
coil housing - unpainted

**Electrical information**

Voltage (nominal)	24V DC			
Response Times (Typ)	Pull-in	< 150 MS	Drop Out	< 80 MS
Coil Rating	125 ohms			
Voltage Protection	Surge suppression diodes fitted as STD			
Leak Performance	Bubble tight			
Pull-in Voltage	≥ 87.5% of nominal			
Drop-Out Voltage	10 - 20% of nominal			
Power Consumption	4.5 watts			
Coil Encapsulation	Class H			
Coil Duty Cycle	100%			



ICO4S 1/4" 3/2 20 BAR (290 PSI) TPMR

**Temperature ratings:**Media (min/max):
-20°C/120°C (-4°F/248°F)Ambient: must be used
within 'T' class temperature
ranges shown**Weight:** 6.5 kg**Materials:**

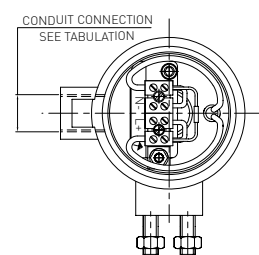
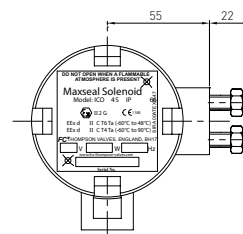
Valve body & trim - 316L

stainless steel

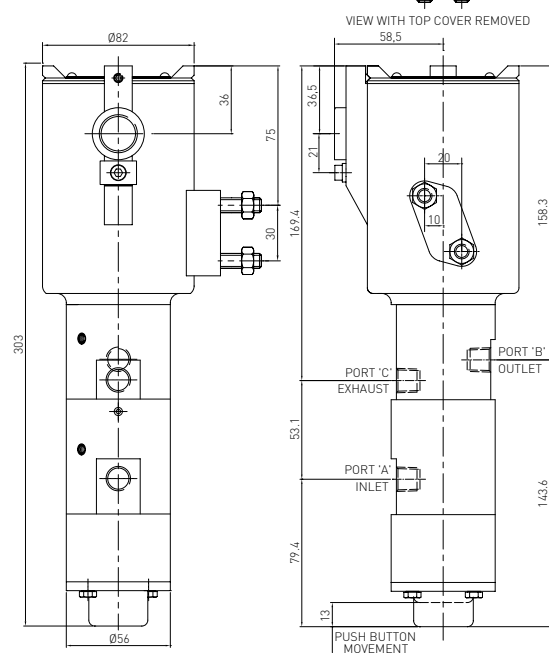
O-Rings seats & seals - high
nitrile

Paint finish - stainless steel

coil housing - unpainted

**Electrical information**

Voltage (nominal)	24V DC			
Response Times (Typ)	Pull-in	< 150 MS	Drop Out	< 80 MS
Coil Rating	125 ohms			
Voltage Protection	Surge suppression diodes fitted as STD			
Leak Performance	Bubble tight			
Pull-in Voltage	≥ 87.5% of nominal			
Drop-Out Voltage	10 - 20% of nominal			
Power Consumption	4.5 watts			
Coil Encapsulation	Class H			
Coil Duty Cycle	100%			



Profile and dimensions mm