

98025 series, 3/2 Indirect solenoid actuated poppet valve

- > 1/4" & 1/2"
(G or NPT), Inline &
NAMUR Interface
- > Main application:
Single acting actuators
- > Approval based on type
examination DGRL
2014/68/EU and IEC
61508, multichannel up
to SIL 3
- > Optional add-on
manual override
or inductive limit
switches on request
- > Suited for outdoor use
under critical
environment conditions
- > Variable valve solenoid
combination



Technical features

Medium:

Neutral or aggressive, gaseous fluids which do not damage the product or affect the function (e.g. compressed air, nitrogen). Based on ISO 8573-1-2010 classification 1-2-3.

Operation:

Indirect solenoid operated poppet valve with external pilot port

Operating pressure:

2 ... 8 bar (29 ... 116 psi) with internal air supply
0 ... 8 bar (0 ... 116 psi) with external air supply

Orifice:

8 mm

Port size:

G1/4, G1/4 NAMUR,
1/4 NPT, 1/4 NPT NAMUR,
G1/2, G1/2 NAMUR,
1/2 NPT, 1/2 NPT NAMUR
NAMUR Interface with integrated recirculation from the exhaust air to the actuator spring chamber

Flow direction:

Fixed

Mounting position:

Any, but preferably with solenoid vertical

Ambient/Media temperature:

-40 ... +60°C (-40 ... +140°F)
-25 ... +60°C (-13 ... +140°F) (SIL version)
Depending on solenoid system. Air supply must be dry enough to avoid ice formation at temperatures below +2°C (35°F).
For outdoor installations all connections must be protected against the penetration of moisture and a solenoid with IP66 protection must be used!

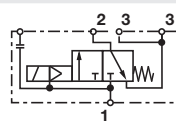
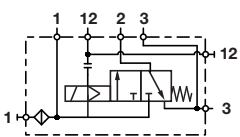
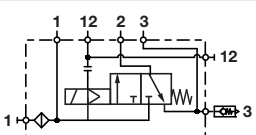
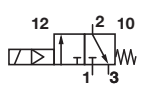
Materials:

Body: Aluminium anodized (suitable for high humidity, sulphuric, sodium chloride or ammonia environments), brass 2.0401, stainless steel 1.4404 (316 L)
Seal: NBR
Inner parts: stainless steel

Flow conversion:

Cv US Gallon/min (water) =
l/min (air) x 0,001
Kv m³/h (water) =
l/min (air) x 0,000906

Technical data
Seals: NBR -40 ... +60°C (-40 ... +140°F) / IEC 61508: -25 ... +60°C (-13 ... +140°F) Housing: Aluminium anodized

Symbol	Port size		Flow (l/min) *1)		Flow (l/min) *2)		Test certificate IEC 61508	Dimension No.	Model *3)
	1, 3	2 (3)	1 » 2	2 » 3	1 » 2	2 » 3			
	G1/4, G1/2	G1/4 NAMUR	1250	1500	2500	3100	x	1	9802505
	1/4 NPT, 1/2 NPT	1/4 NPT NAMUR	1250	1500	2500	3100	x	1	9802515
	G1/4, G1/2	G1/4 NAMUR	1250	1500	2500	3100	—	3	9802509 *4)
	1/4 NPT, 1/2 NPT	1/4 NPT NAMUR	1250	1500	2500	3100	—	3	9802519 *4)
	G1/4, G1/4	G1/4 NAMUR P into flange plate	550	900	1300	2100	x	5	9802525
	G1/4, G1/4	G1/4 NAMUR P into flange plate	550	900	1300	2100	—	6	9802825 *5)
	G1/2	G1/2	1300	1200	2700	2600	x	2	9802555
	1/2 NPT	1/2 NPT	1300	1200	2700	2600	x	2	9802565
	G1/2	G1/2	1300	1200	2700	2600	—	4	9802559 *4)
	1/2 NPT	1/2 NPT	1300	1200	2700	2600	—	4	9802569 *4)

*1) Inlet pressure 6 bar (87 psi), outlet pressure 5 bar (72 psi)

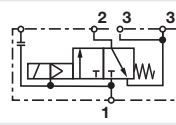
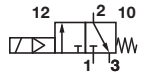
*2) Inlet pressure 8 bar (116 psi), outlet pressure 0 bar (0 psi)

*3) When ordering please indicate solenoid, voltage and current type (frequency).

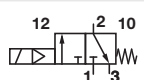
*4) Only low power solenoids 2085 and 2086 are possible

*5) With exhaust guard

Housing: Stainless steel

Symbol	Port size		Flow (l/min) *1)		Flow (l/min) *2)		Test certificate IEC 61508	Dimensions no.	Model *3)
	1, 3	2 (3)	1 » 2	2 » 3	1 » 2	2 » 3			
	G1/4, G1/2	G1/4 NAMUR	1250	1500	2500	3100	x	1	9802705
	1/4 NPT, 1/2 NPT	1/4 NPT NAMUR	1250	1500	2500	3100	x	1	9802715
	G1/2	G1/2	1300	1200	2700	2600	x	2	9802755
	1/2 NPT	1/2 NPT	1300	1200	2700	2600	x	2	9802765

Housing: Brass

Symbol	Port size		Flow (l/min) *1)		Flow (l/min) *2)		Test certificate IEC 61508	Dimensions no.	Model *3)
	1, 3	2 (3)	1 » 2	2 » 3	1 » 2	2 » 3			
	G1/2	G1/2	1300	1200	2700	2600	x	2	9802655
	1/2 NPT	1/2 NPT	1300	1200	2700	2600	x	2	9802665

*1) Inlet pressure 6 bar (87 psi), outlet pressure 5 bar (72 psi)

*2) Inlet pressure 8 bar (116 psi), outlet pressure 0 bar (0 psi)

*3) When ordering please indicate solenoid, voltage and current type (frequency).

Option selector
9802★★★★★★★★

Materials	Substitute
Aluminium	5
Brass	6
Stainless steel	7
Special version *1)	8
Port size	Substitute
G1/4 NAMUR	0
1/4 NPT NAMUR	1
G1/2	5
1/2 NPT	6
Version	Substitute
Standard	5
Low power version	9

Voltages	Substitute
24 V d.c.	02400
230 V a.c.	23050
Solenoids	Substitute
See table page 3	

*1) IMI Norgren internal use.
Port size and other features shown under version are different.
E.g. 9802825: Valve with inlet filter and exhaust guards according to customer requirement.

Solenoids, standard voltages

	Power consumption		Rated current		Protection class IP/NEMA	Ex-Protection (ATEX-Category)	Temperature Ambient/ Media (°C)	Electrical connection	Drawing No.	Circuit diagram No.	Model
	24 V d.c. (W)	230 V a.c. (VA)	24 V d.c. (mA)	230 V a.c. (mA)							
	1,9	2,1 *2)	78	11	IP65 (with connector)	—	-25 ... +60	Connector DIN EN 175301-803, form A *1)	7	14/16	0763
	3,6	—	150	—	IP66	II 2G Ex mb IIC T4 Gb II 2D Ex mb IIC T115°C Db	-20 ... +70	Cable length 3m	8	15	0298
	—	5,3	—	18	IP66	II 2G Ex mb IIC T4 Gb II 2D Ex mb IIC T115°C Db	-20 ... +70	Cable length 3m	8	17	0299
	0,8	—	38	—	IP66 (with cable gland)	II 2G Ex Eb IIC T5/T6 Gb II 2D Ex tb IIC T130°C Db	T5: -40 ... +80 T6: -40 ... +70 -40 ... +80	M20 x 1,5 *1)	9	15	4200
	—	1,3	—	6	IP66 (with cable gland)	II 2G Ex Eb IIC T5/T6 Gb II 2D Ex tb IIC T130°C Db	T5: -40 ... +80 T6: -40 ... +70 -40 ... +80	M20 x 1,5 *1)	9	17	4201
	0,8	—	33	—	IP66 (with cable gland)	II 2G Ex db mb IIC T5/T6 Gb II 2G Ex eb mb IIC T5/T6 Gb II 2D Ex tb IIC T130°C Db	T5: -40 ... +80 T6: -40 ... +70 -40 ... +80	1/2 NPT *1)	10	20	4600
	—	1,3	—	6	IP66 (with cable gland)	II 2G Ex db mb IIC T5/T6 Gb II 2G Ex eb mb IIC T5/T6 Gb II 2D Ex tb IIC T130°C Db	T5: -40 ... +80 T6: -40 ... +70 -40 ... +80	1/2 NPT *1)	10	21	4601
	0,8	—	33	—	IP66 (with cable gland)	II 2G Ex db mb IIC T5/T6 Gb II 2G Ex eb mb IIC T5/T6 Gb II 2D Ex tb IIC T130°C Db	T5: -40 ... +80 T6: -40 ... +70 -40 ... +80	M20 x 1,5 *1)	10	20	4602
	—	1,3	—	6	IP66 (with cable gland)	III 2G Ex db mb IIC T5/T6 Gb II 2G Ex eb mb IIC T5/T6 Gb II 2D Ex tb IIC T130°C Db	T5: -40 ... +80 T6: -40 ... +70 -40 ... +80	M20 x 1,5 *1)	10	21	4603
	0,8	—	33	—	IP66 (with cable gland)	II 2 G Ex db mb IIC T4/T6 Gb II 2 G Ex eb mb IIC T4/T6 Gb	T4: -40 ... +80 T6: -40 ... +70	M20 x 1,5 *1)	12	15	4802
	—	1,3	—	6	IP66 (with cable gland)	II 2 G Ex db mb IIC T4/T6 Gb II 2 G Ex eb mb IIC T4/T6 Gb	T4: -40 ... +50 T6: -40 ... +40	M20 x 1,5 *1)	12	17	4803
	1,4	—	59	—	4x	Cl. I, Div. 1, Gr. A - D Cl. II/III, Div. 1, Gr. E - G T3C (160°C)	-20 ... +60	Flying leads length 460 mm	11	14	3720

Standard voltages (±10%) 24 V d.c., 230 V a.c., other voltages on request. Design according to VDE 0580, EN 50014/50028. 100% duty cycle.

*1) Connector/cable gland is not scope of delivery, see table »Accessories»

*2) Required connector: type 0570275 for d.c.; type 0663303 for a.c., 200 V d.c. please order solenoid voltage 200 V d.c.


Attention: The protection class for coil series 46xx and 48xx is determined by the choice of cable gland.

Example: if an ATEX-certified cable gland is used that has Ex d type of protection, the solenoid will have the protection class Ex db mb; if a cable gland with Ex e type of protection is used, the solenoid will have protection class Ex eb mb.

Approvals

Model	Approvals ATEX	IECEX	FM	Datasheet
029x	KEMA 02 ATEX 1347 X	IECEX DEK 13.0014 X	—	-
372x, 382x	—	—	CSA-LR 57643-6	71.575
42xx	KEMA 98 ATEX 4452 X	IECEX KEM 09.0068 X	—	71.580
46xx	PTB 02 ATEX 2085 X	IECEX PTB 11.0094 X	—	71.585
48xx	EPS 18 ATEX 1 019	IECEX EPS 18.0013	—	71.590

Solenoid actuators for intrinsically-safe circuits

	Nominal resistance RN coil (Ω)	Min. required switching current (mA)	Resistance Rw 60 coil (Ω)	Required voltage at terminal Rw 60 (V)	IP Protection class	Ex-Protection (ATEX-Category)	Temperature Ambient/Media (°C)	Drawing No.	Circuit diagram No.	Model
	200	33	240	8	IP66 (with cable gland)	II 2G Ex ia IIC T4/T6 Gb II 2D Ex ia IIIC T80°C Db II 2D Ex ia IIIC T100°C Db	T4: -40 ... +80 T6: -40 ... +60 -40 ... +60	13	18	2050
	391	24	460	11	IP66 (with cable gland)	II 2G Ex ia IIC T4/T6 Gb II 2D Ex ia IIIC T80°C Db II 2D Ex ia IIIC T100°C Db	T4: -40 ... +80 T6: -40 ... +60 -40 ... +60	13	18	2051
	736	17	880	15	IP66 (with cable gland)	II 2G Ex ia IIC T4/T6 Gb II 2D Ex ia IIIC T80°C Db II 2D Ex ia IIIC T100°C Db	T4: -40 ... +80 T6: -40 ... +60 -40 ... +60	13	18	2052
	1220	13	1460	19	IP66 (with cable gland)	II 2G Ex ia IIC T4/T6 Gb II 2D Ex ia IIIC T80°C Db II 2D Ex ia IIIC T100°C Db	T4: -40 ... +80 T6: -40 ... +60 -40 ... +60	13	18	2053

Cable gland (cable Ø 5 ... 10 mm) is in scope of delivery

When selecting an intrinsically safe power supply, the permissible maximum values according to the Certificate of Conformity should be taken into account.


U_i = 45 V, I_i = 500 mA according to Tab. A. 1, EN 60079-11

P_i = 2,0 W, L_i and C_i can be ignored.

Approvals

Model	Approvals ATEX	IECEEx
205x	PTB 07 ATEX 2019	IECEEx PTB 07.0017

Low-power pilot system in protection class II 2G Ex ia IIC T4/T6

	Power P (mW)	Switch-on voltage U on (V)	Switch-off voltage U off (V)	Rated current I on (mA)	Resistance coil R (Ω)	IP Protection class	Ex-Protection (ATEX-Category)	Temperature Ambient/Media (°C)	Circuit diagram No.	Model
	6,3 (+20°C)	≥ 4,3 (+20°C) ≥ 5,2 (+80°C)	≤ 1,44 (+20°C) ≤ 1,2 (-25°C)	≥ 1,45	2800	IP65 (with cable gland)	II 2G Ex ia IIC T4/T6	T4: -40 ... +80°C T6: -40 ... +60°C	19	2085
	23,2 (+20°C)	≥ 16 (+20°C) ≥ 16,8 (+80°C)	≤ 5,4 (+20°C) ≤ 4,7 (-25°C)	≥ 1,45	10900	IP65 (with cable gland)	II 2G Ex ia IIC T4/T6	T4: -40 ... +80°C T6: -40 ... +60°C	19	2086

Cable gland (cable Ø 5 ... 10 mm) is in scope of delivery

Approvals

Model	Approvals ATEX
208x	PTB 06 ATEX 2001U

Ordering example

9802509	2085	005	00
Valve	Pilot 6,3 mW	Standard	00 internal air supply
Valve	Pilot 6,3 mW	Standard	0Z external air supply

Max. values Ex i

U _i (V)	I _i (mA)	P _i *1) (mW)
25	150	250
27	125	250
28	115	250
30	100	250
32	85	250

Air consumption: home position ≤ 60 l/h,
operating position ≤ 15 l/h

*1) Model 2086 without P_i limiting. C_i

and L_i can be ignored.

Partnumbers for international approval

Land/Approval	Coil/Code	029x	205x	208x	372x	42xx	46xx	48xx
Europa/ATEX	Standard	x	x	x	-	x	x	x
International/IECEX	Standard	x	x	x	-	x	x	x
China/NEPSI	-01	-	x	-	-	x	x	-
Brasilien/INMETRO	-02	-	x	-	-	x	x	-
Korea/KOSHA (only gas approval)	-03	-	x	-	-	x	x	x
Russland, Kasachstan & Weißrussland/TR-CU 012	-04	x	x	x	-	x	x	x
Indien/CCOE	Standard	-	x	-	-	x	x	-
Taiwan/ITRI	Standard	-	x	-	-	x	x	-
USA/FM	Standard	-	-	-	x	-	-	-
Kanada/CSA	Standard	-	-	-	x	-	-	-

Example: 0000000420002400-04

(Coil: 4200; Voltage: 24V DC; Approval: TR-CU 012)

Accessories

Electrical connection

Cable gland
Protection class Ex e, Ex d
(ATEX),
Nickel plated brass/
Stainless steel



Page 12

For solenoid	Thread	Cable Ø (mm)	Material	Protection class (ATEX)	Ambient temperature limitation *1)	Model
42xx	M20 x 1,5	7,0 ... 12,0	Plastic	II 2G Ex e / II 2D Ex t	See table	0589735
42xx	M20 x 1,5	10,0 ... 14,0	Plastic	II 2G Ex e / II 2D Ex t	See table	0589736
42xx	M20 x 1,5	6,0 ... 12,0	Plastic	II 2G Ex e / II 2D Ex t	See table	0589737
42xx	M20 x 1,5	5,0 ... 10,0	Plastic	II 2G Ex e / II 2D Ex t	See table	0589739
46xx	M20 x 1,5	5,0 ... 14,0	Nickel plated brass	II 2G Ex e / II 2D Ex t	-	0589654
46xx	M20 x 1,5	10,0 ... 14,0	Nickel plated brass	II 2G Ex d / II 2D Ex t	-	0588851
46xx	1/2 NPT	7,5 ... 11,9	Nickel plated brass	II 2G Ex d / II 2D Ex t	-	0588925
46xx, 48xx	M20 x 1,5	9,0 ... 13,0	Stainless steel 1.4571	II 2G Ex e / II 2D Ex t	-	0589385
46xx, 48xx	M20 x 1,5	7,0 ... 12,0	Stainless steel 1.4404	II 2G Ex d / II 2D Ex t	-	0589395
46xx, 48xx	M20 x 1,5	10,0 ... 14,0	Stainless steel 1.4404	II 2G Ex d / II 2D Ex t	-	0589387

*1) The limitation of the temperature range to the mentioned range is due to the self-heating of the solenoid.

For solenoid	Ambient temperature limitation solenoid 42xx		
	0589735 & 0589736 *2)	0589737	0589739 *2)
420x/425x	T5 & Dust Ex: -35°C ... + 80°C T6: -35°C ... +70°C	T5 & Dust Ex: -40°C...+68°C T6: -40°C...+68°C	T5 & Dust Ex: -40...+78°C

*2) Tested for the lower level of mechanical risk (4 joule), an additional protection against impacts might be needed.

Connector
DIN EN 175301-803







Page 9

0570275 (Form A)

0663303 (with rectifier)

Further plugs in datasheet 71.507





Accessories

Silencer *1)	Silencer (Stainless steel) *1)	Silencer (Brass) *1)	Exhaust guard *2)
			
Page 11	Page 11	Page 11	Page 11
M/S2 (G1/4)	0014613 (G1/4)	T40C2800 (G1/4)	0613422 (G1/4, 1/4 NPT)
C/S2 (1/4 NPT)	0613678 (1/4 NPT)	MS002A (1/4 NPT)	0613423 (G1/2, 1/2 NPT)
M/S4 (G1/2)	0014813 (G 1/2)	T40C4800 (G 1/2)	
C/S4 (1/2 NPT)	0613679 (1/2 NPT)	MS004A (1/2 NPT)	

*1) For indoors use only

*2) For outdoors use, opening pressure ~ 0,2 bar

Manual override

Manual override (without detent)	Manual override (with detent, return at pressure fails) *3)	Manual override (with detent) *3) *4)	Manual override (for start-up only)
			
Page 11	Page 11	Page 11	Page 11
0553886	0553887	0614084	0613379 (without detent)

*3) Using the manual override with detent cancels the SIL-Approval!

*4) Use function description 75036430

Manual override

Using the manual override with detent cancels the SIL-approval! The manual override is meant to be used for system testing.

NAMUR accessories

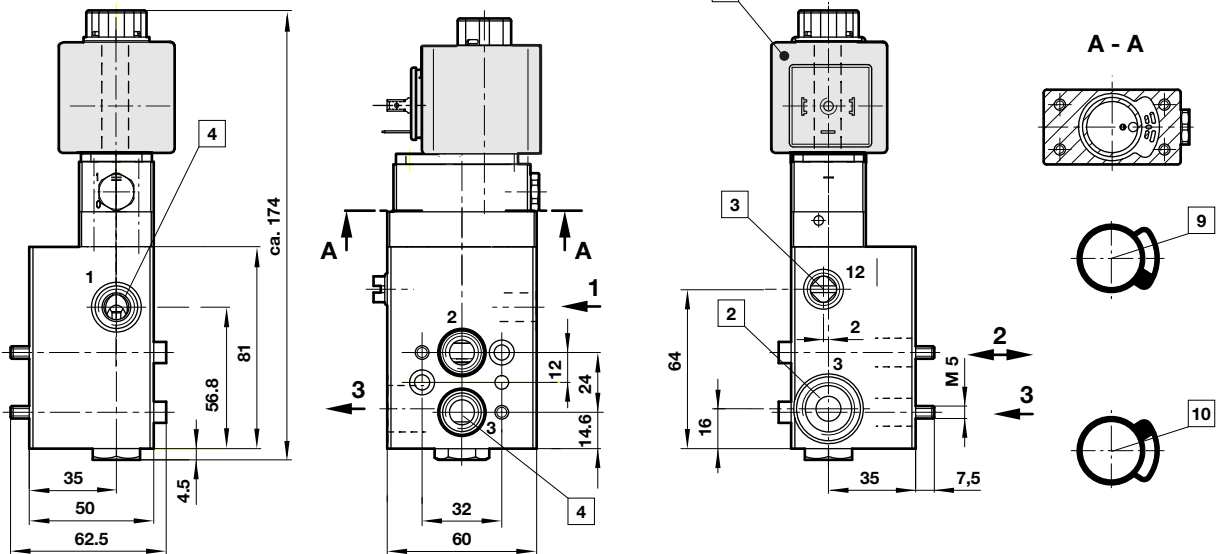
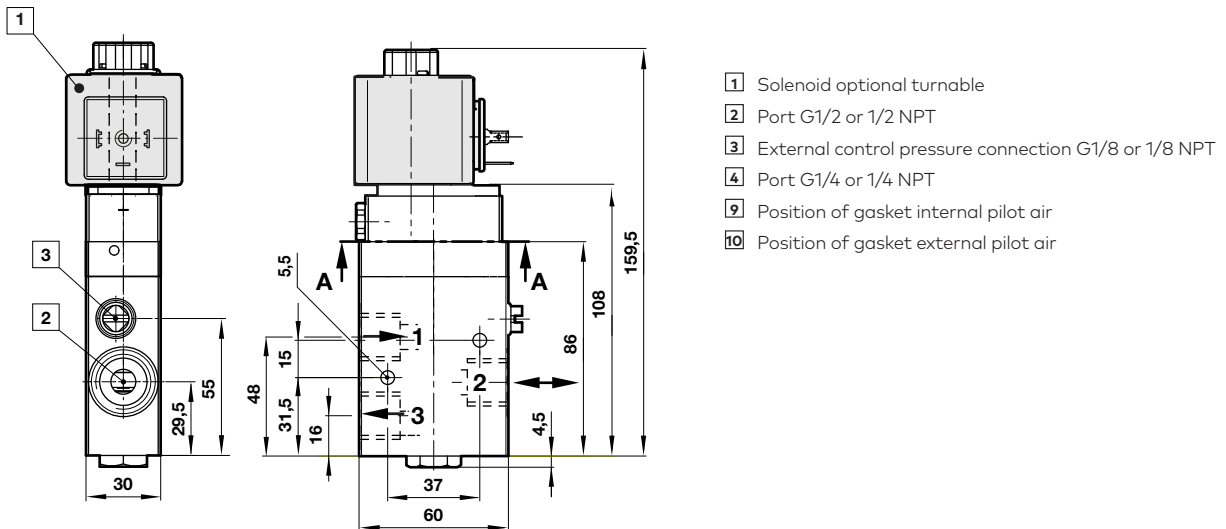
Throttle control plate *5)	Flange plate	Yoke	Mounting plate	Quick exhaust module *6)
				
Page 12	Page 12	Page 12	Page 13	
4040239	0612790 (NAMUR single connection plate) 0612791 (NAMUR-rip use in combination with 0612790)	0540593 (Pipe mounting use in combination with 0612790)	0613453 (90°)	4050218

*5) The throttle control plate 4040239 has a minimum flow rate for safety reason.

*6) Technical details see catalogue page en 5.4.820.

**Drawings
Valves**

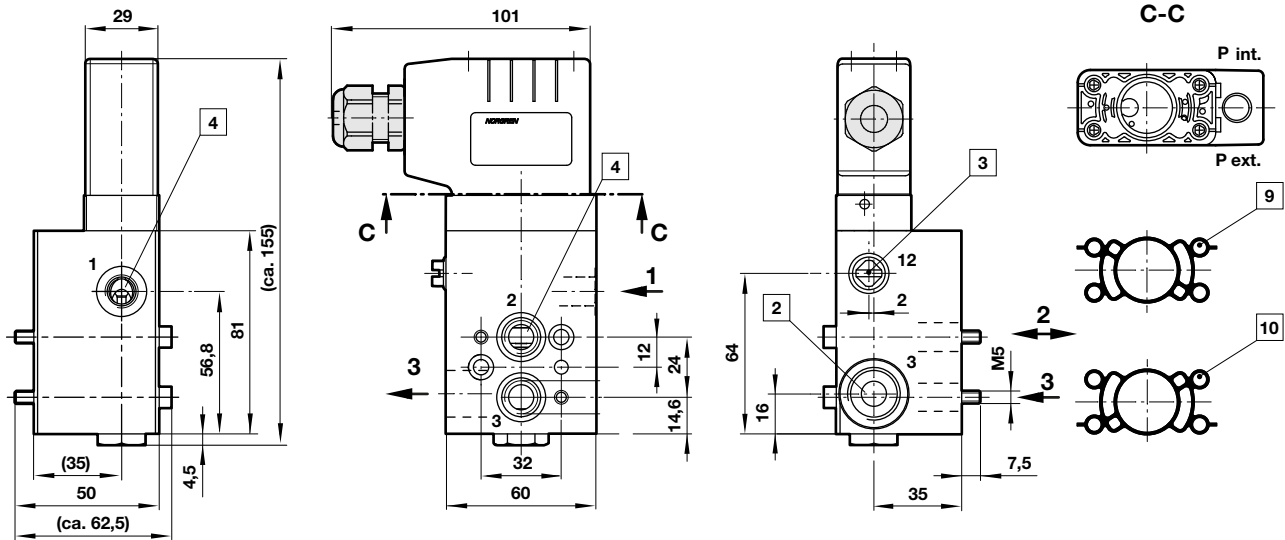
 Dimensions in mm
Projection/First angle

1 Weight: Aluminium eloxiert: 0,9 kg, Stainless steel: 1,5 kg

2 Weight: Aluminium eloxiert: 0,6 kg, Stainless steel: 1,0 kg, Brass: 1,0 kg


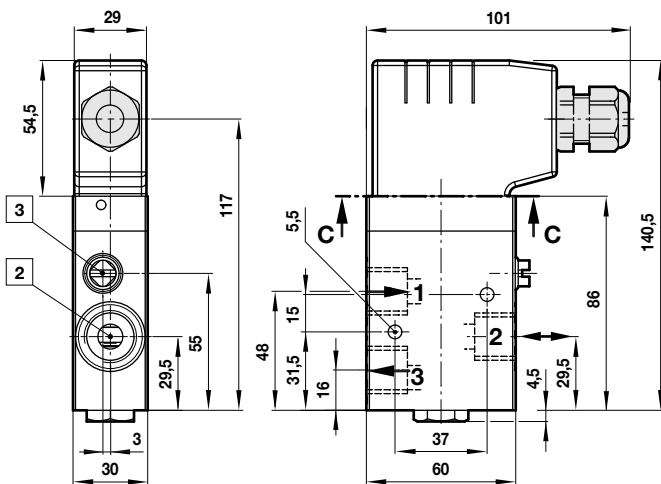
- 1 Solenoid optional turnable
- 2 Port G1/2 or 1/2 NPT
- 3 External control pressure connection G1/8 or 1/8 NPT
- 4 Port G1/4 or 1/4 NPT
- 9 Position of gasket internal pilot air
- 10 Position of gasket external pilot air

3 Weight: Aluminium eloxiert: 0,9 kg

Dimensions in mm
Projection/First angle



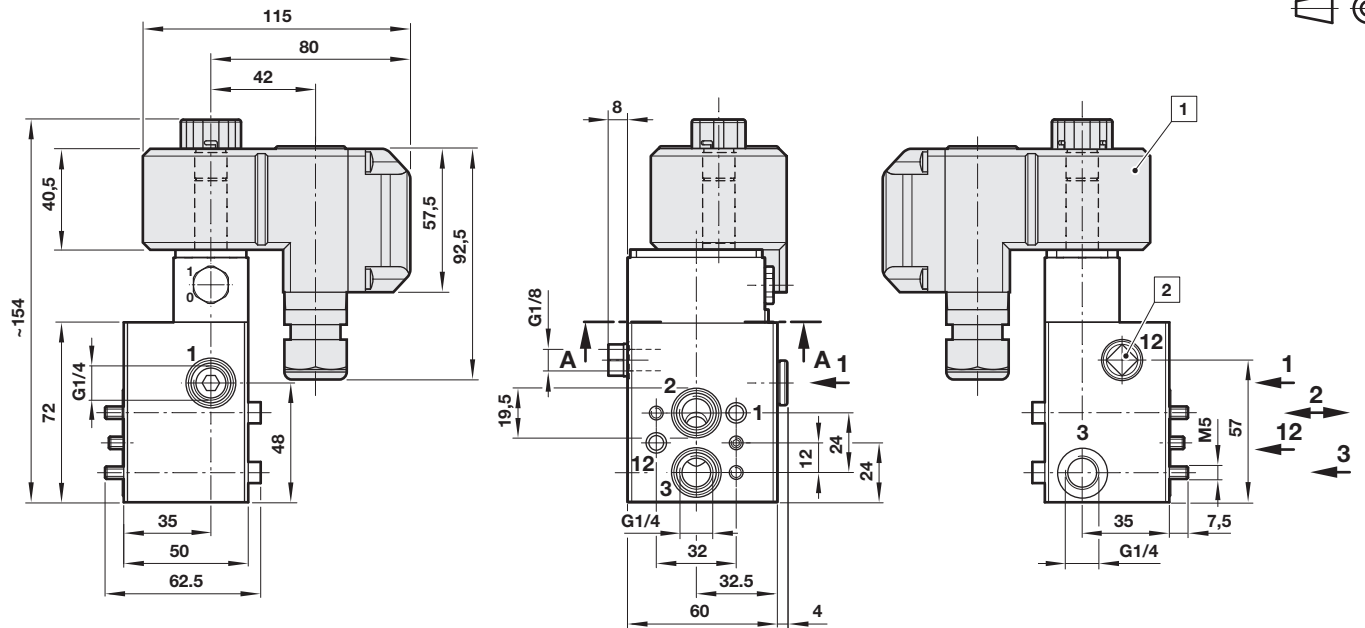
4 Weight: Aluminium eloxiert: 0,6 kg



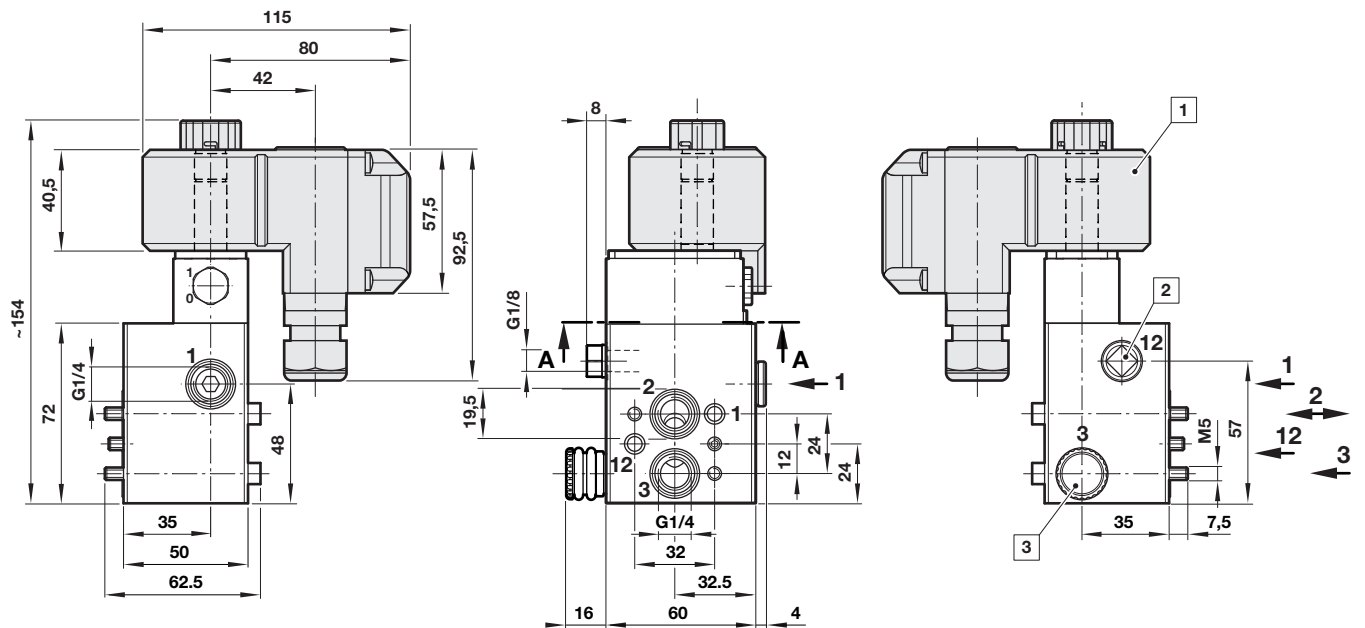
- 2** Port G1/2 or 1/2 NPT
- 3** External control pressure connection G1/8 or 1/8 NPT
- 4** Port G1/4 or 1/4 NPT
- 9** Position of gasket internal pilot air
- 10** Position of gasket external pilot air

5 Weight: Aluminium eloxiert: 0,9 kg

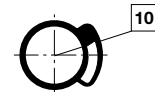
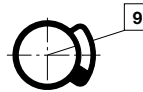
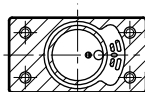
Dimensions in mm
Projection/First angle



6 Weight: Aluminium eloxiert: 0,9 kg

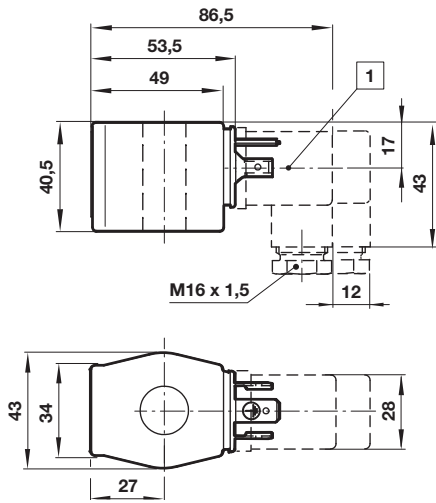


A - A



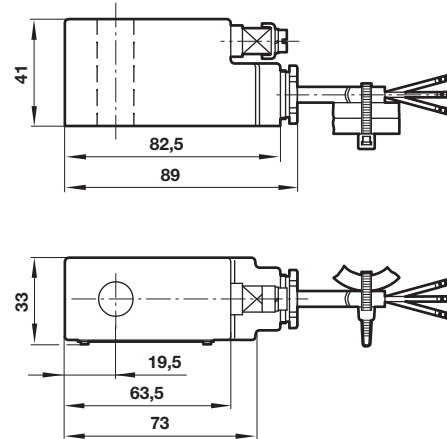
- 1 Solenoid optional turnable
- 2 External control pressure connection G1/8
- 3 Exhaust guard G1/4
- 9 Position of gasket internal pilot air
- 10 Position of gasket external pilot air

7 Weight: 0,3 kg

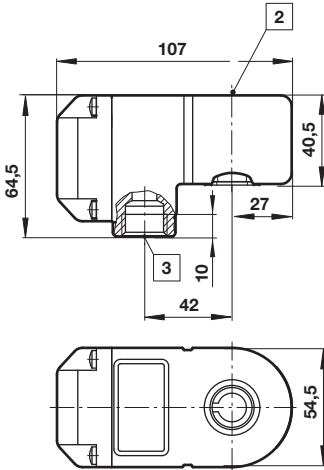


8 Weight: 0,4 kg

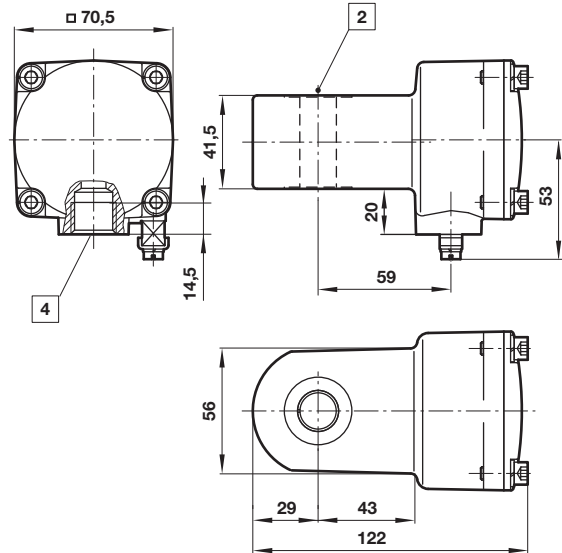
Dimensions in mm
Projection/First angle



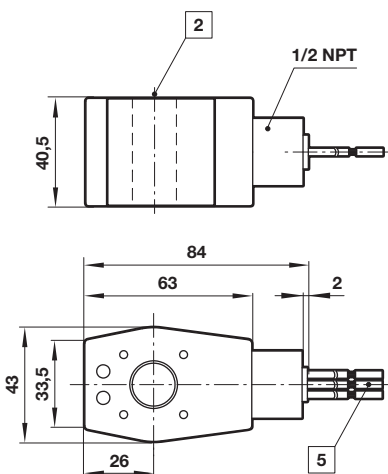
9 Weight: 0,6 kg



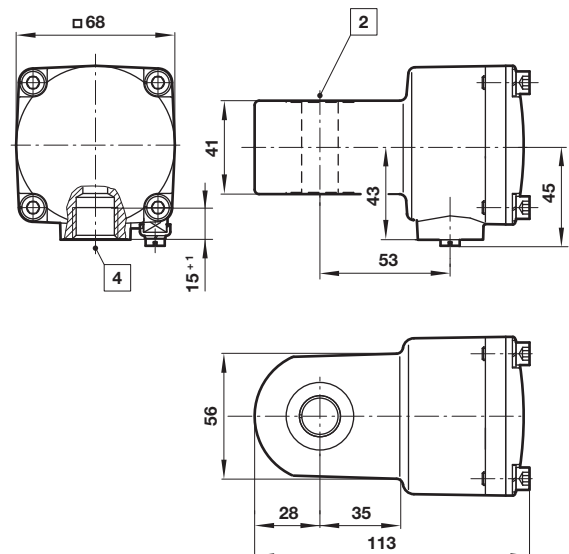
10 Weight: 0,8 kg



11 Weight: 0,4 kg

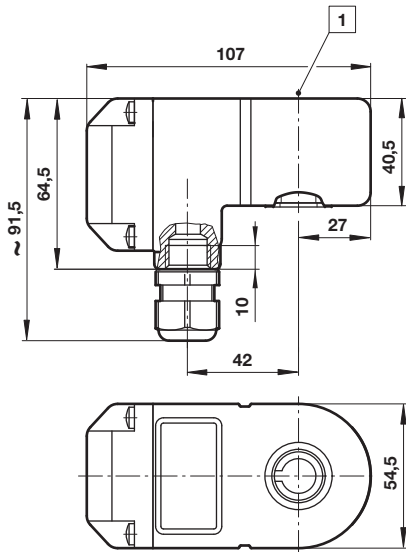


12 Weight: 1,2 kg



- 1 Connector can be indexed by 4x90°
- 2 Ø 13 (with spacer tube)
- 3 M20 x 1,5
- 4 M20 x 1,5 or 1/2 NPT
- 5 Flying leads AWG 18 (460 mm long)

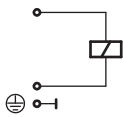
13 Weight: 0,85 kg



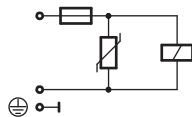
2 Ø 13 (with spacer tube)

Circuit diagrams

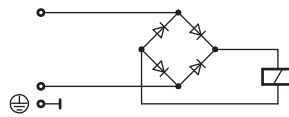
14



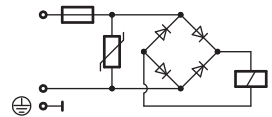
15



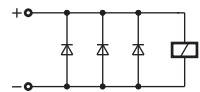
16



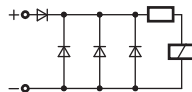
17



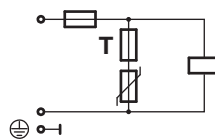
18



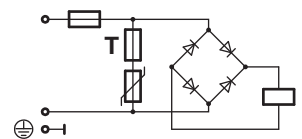
19



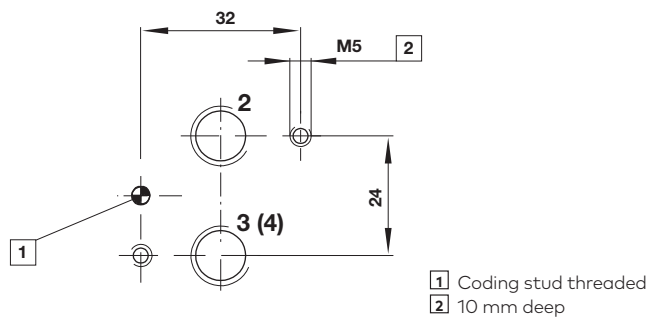
20



21



NAMUR hole pattern (actuator side)

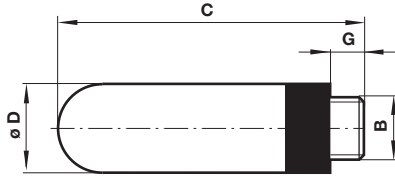


NAMUR quick exhaust module for a better kv-value by exhaust see data sheet 5.4.820

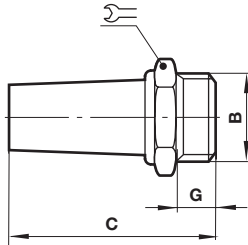
NAMUR interlinking plates in redundancy design for »safety exhausting★ and »safety ventilating★ see data sheet 5.4.830

Accessories
Silencer

Model: M/S2, M/S4, C/S2, C/S4



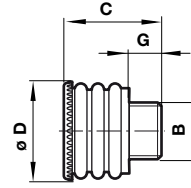
B	G	C	Ø D	Weight (g)	Model
G1/4	7	35,5	15,5	2,9	M/S2
1/4 NPT	7	35,5	15,5	2,9	C/S2
G1/2	12	67	23	11,5	M/S4
1/2 NPT	12	67	23	11,5	C/S4

Silencer (Stainless steel and brass)


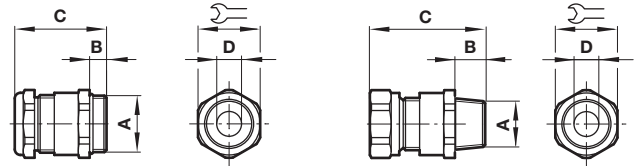
B	C	G	Ø D	Gewicht (g)	Typ
G1/4	33	8	17	18	T40C2800
1/4 NPT	35	8	9/16	18	MS002A
G1/4	36	8	16	23	0014613
1/4 NPT	36	8	16	67	0613678
G1/2	56	12	27	63	T40C4800
1/2 NPT	48	12	7/8	63	MS004A
G1/2	49	12	24	81	0014813
1/2 NPT	49	12	24	235	0613679

Exhaust guard

Model: 0613422, 0613423

 Dimensions in mm
 Projection/First angle


Suitable for	G	C	Ø D	Weight (g)	Model
G1/4, 1/4 NPT	10	26,5	21	5	0613422
G1/2, 1/2 NPT	12	33,5	29	11	0613423

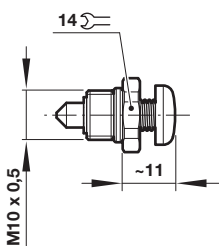
Cable gland


0588925 only

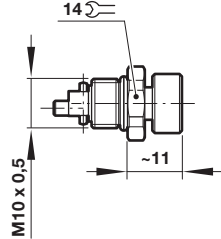
A	B	C	Ø D	Ø D	Model
M20 x 1,5	10	40	7,0 ... 12,0	24	0589735
M20 x 1,5	10	43	10,0 ... 14,0	27	0589736
M20 x 1,5	10	40	6,0 ... 12,0	24	0589737
M20 x 1,5	10	39,5	5,0 ... 10,0	24	0589739
M20 x 1,5	6,5	35,5	5,0 ... 14,0	24	0589654
M20 x 1,5	12	37	9,0 ... 14,0	30	0588851
1/2 NPT	15	58	7,5 ... 11,9	24	0588925
M20 x 1,5	6,5	27,5	9,0 ... 13,0	22	0589385
M20 x 1,5	16	40	7,0 ... 12,0	24	0589395
M20 x 1,5	16	41	10,0 ... 14,0	24	0589387

Manual override

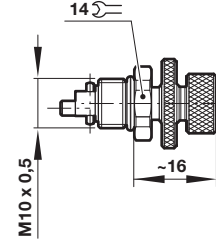
Model: 0553886



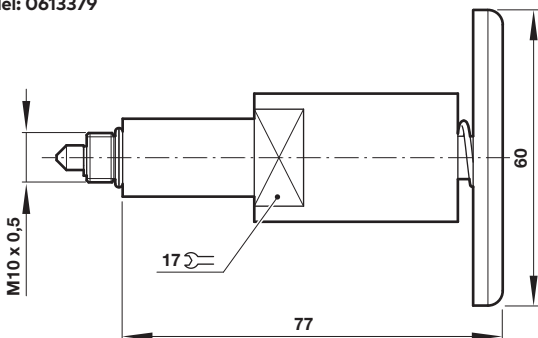
Model: 0553887



Model: 0614084

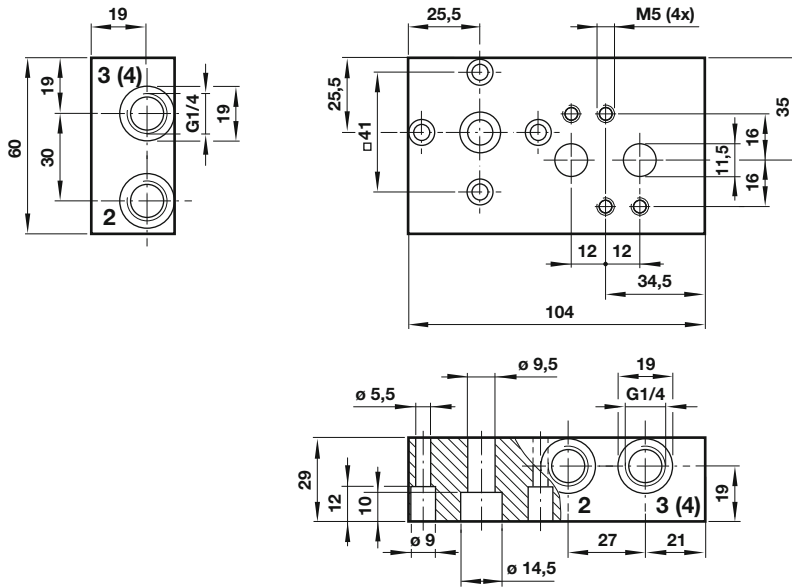


Model: 0613379

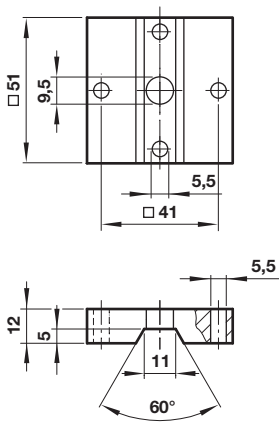


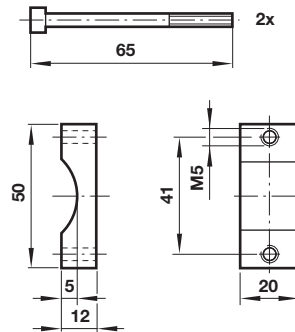
Single connection plate

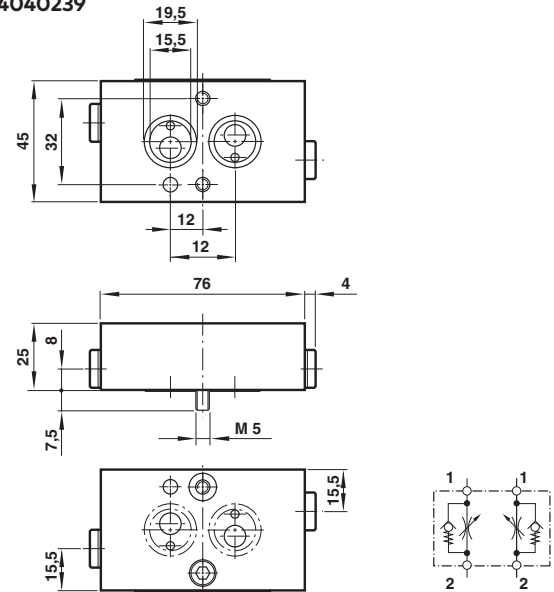
Model: O612790

 Dimensions in mm
 Projection/First angle

NAMUR slot

Model: O612791


Yoke

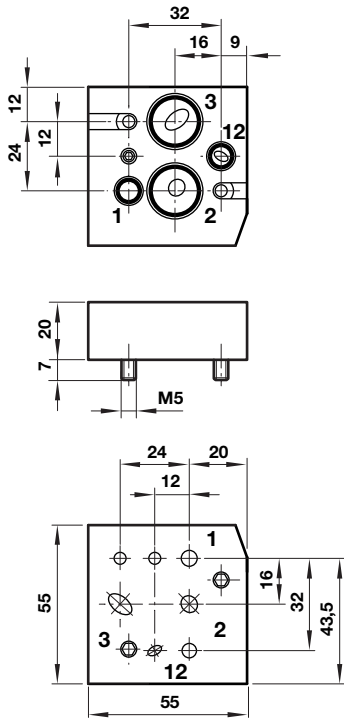
 Model:
 O540593

Throttle control plate

 Model:
 4040239


Mounting plate

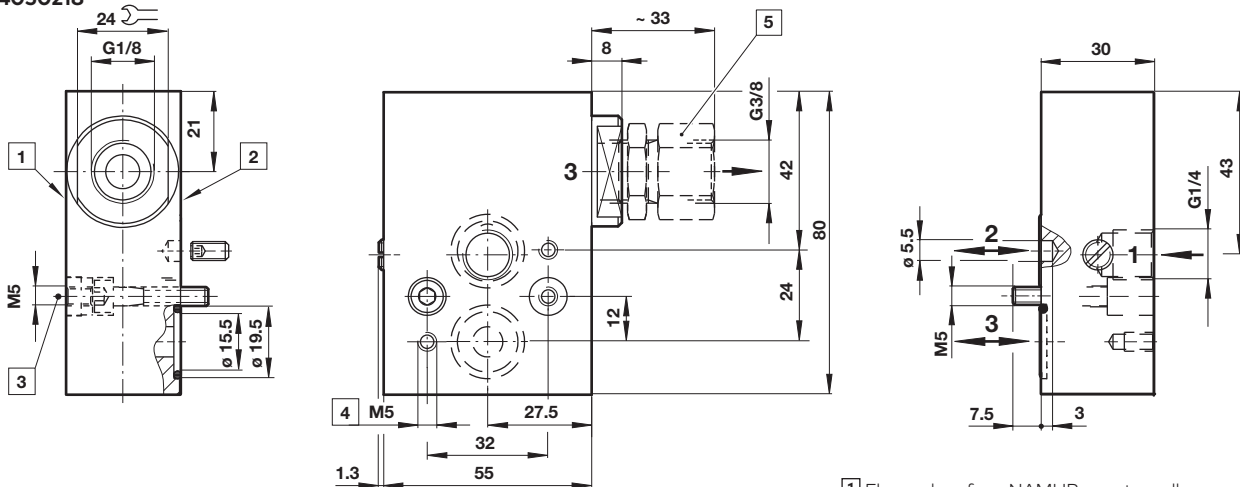
Model: 0613453 (90°)

Dimensions in mm
Projection/First angle



Quick exhaust module

Model: 4050218



- 1 Flanged surface NAMUR or externally mounted valve
- 2 Flanged surface NAMUR actuator
- 3 Push-in threaded piece after plate mounting
(to secure correct position)
- 4 8 mm deep
- 5 Flow regulator assembly

Warning

These products are intended for use in industrial compressed air and fluid systems only. Do not use these products where pressures and temperatures can exceed those listed under »**Technical features/data**«. Before using these products with fluids other than those specified, for non-industrial applications, life-support systems, or other applications not within published specifications, consult Norgren GmbH.

Through misuse, age, or malfunction, components used in fluid power systems can fail in various modes.

The system designer is warned to consider the failure modes of all component parts used in fluid power systems and to provide adequate safeguards to prevent personal injury or damage to equipment in the event of such failure. System designers must provide a warning to end users in the system instructional manual if protection against a failure mode cannot be adequately provided.

System designers and end users are cautioned to review specific warnings found in instruction sheets packed and shipped with these products.

Functional safety (SIL):

Suitable for certain applications can only be evaluated through examination of each safety-related overall system with regard to the requirements of IEC 61508/61511.